



# the **Parish Magazine**

of LUDLOW ST LAURENCE

**Led by the Holy Spirit**

Pg5

**Memories of  
World War II**

Pg17

**Queen of textiles**

Pg27

**A honey  
heaven**

Pg19

JUNE 2025



# 2 course supper for £16

Every **Thursday** and  
**Friday** from **5.30pm**.  
Last table bookings  
6.30pm.



Book at least a  
day in advance at  
**billskitchen.uk**

Not in conjunction with  
any other offer



**billskitchen.uk**



The official start of summer may come towards the end of this month at the summer solstice, but for many June conjures up images of strawberries and cream, roses and long days of sunshine from the start. So, what can we expect this year when May has already given us all of that – more of the same or something completely different? This is a particularly pertinent question for us at St Laurence's as we move through the various stages of the Church of England's procedures for finding a new Rector for the Ludlow benefice. We know that it will not be a speedy process (p7) but we are confident that, led by the Holy Spirit (p5), we will find the right person to lead our churches in the years ahead.

In the meantime it is very much 'business as usual', both in our churches and in the Ludlow Tower. This month you will find Uncle Eustace taking his customary wry look at his parishioners (p37) and our eco-worrier celebrating the possibilities of small green spaces (p25) and we are taken back to the Second World War (p17).

*Lesley Harling (Editor)*  
07309 263730

## This month's cover:

**Image:** St Laurence's organ

**Graphic design:** Nicky Luck  
Nickyluck@nannolica.co.uk

**Printing:** Signworx Hereford  
Moreton-on-Lugg, Herefordshire

## CONTENTS

Led by the Holy Spirit	5
When does the new rector start?	7
News from the PCC	9
From the registers	9
Opening doors: deliverance	11
The quiet revival	11
Introducing: Gail Forrest	13
He gave us eyes to see them	14
News from St John's	15
Memories of World War II	17
Sunday services in Ludlow	18
A honey heaven	19
Ludlow Local Listing	20
Arts at St Laurence in June	22
What's on in June	23
Notes from an eco-worrier: wildlife in small green spaces	25
The tears of St Peter	26
Silk - the queen of textiles	27
Big Brew	28
Chancel concerts	29
Ludlow Palmers: a small job	31
Ride + Stride 2025	32
Poetry corner: Wendy Cope	33
The curious life of the cuckoo	35
Children's page	36
Uncle Eustace - What security cameras in church will tell you	37
Parish directory & copy deadline	38

*Opinions expressed in contributed articles in this magazine are those of the contributor and do not necessarily represent the position or opinions of the PCC or Editorial Committee.*







A collage of images for Capitol Carpets. The top left shows a carpet showroom with various samples. The bottom left shows a close-up of a patterned carpet. The middle left shows a modern interior with a white chair and a striped rug. The middle right shows a staircase with a patterned carpet runner. The background is a light beige color.

**CAPITOL  
CARPETS**

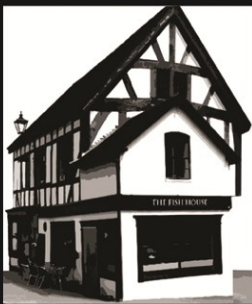
16 Bull Ring  
Ludlow  
SY8 1AD

Carpets • Vinyl •  
Karndean • Sisal •  
Curtains • Blinds •  
Beds

**CAPITOL  
CARPETS**

[www.capitol-carpets.co.uk](http://www.capitol-carpets.co.uk)

**Tel: 01584 873891**



**THE  
FISH  
HOUSE**

We receive a fresh delivery  
daily with a huge variety of  
raw or smoked fish, shellfish  
and more.



**Seafood bar  
now open Friday &  
Saturday**

Open Wed & Thur 10am-  
1pm



# LED BY THE HOLY SPIRIT

The Conclave concluded within two days and there is a new Pope. The selection process for the Archbishop of Canterbury will take significantly longer! Both processes seek to be guided by the Holy Spirit, it's just one seems to be more efficient, although less consultative. The work of seeking the Spirit's guidance is not straightforward. I'm fascinated by oblique references in the Bible to this apostle or that going on a mission with the confident assertion they were 'led by the Holy Spirit'. The Old Testament prophets seem even more confident, their words often appended by, 'thus saith the Lord', or equivalent. I wonder what form that leading took?

Was it a strong inward impression; an audible voice, or a response to what they had read in scripture?

I remember someone coming to me for counsel many years ago who said he felt the Lord was leading him to leave his wife because he had gone off her and had fallen for a work colleague. I suggested obeying the command not to commit adultery probably applied in this case. It didn't need a strong sense of the presence of God. Those commands are there for a reason, especially when unruly human passions get the better of us. How are we to distinguish the actual leading of the Holy Spirit from too much cheese before bedtime, or vain attempts to sanctify retrospectively what we would have done anyway?

In the Bible discernment in big areas of life is almost invariably corporate. Multiple voices and perspectives come together, each with a piece of a puzzle, each reflecting something of the work of the Spirit within them. Individuals need an objective view. Our capacity for self-deception about our gifts is almost boundless. It is more likely that God

will lead us in directions that cohere with the way he made us rather than contradicting them. But sometimes corporate discernment in the Bible leads people in directions that are risky and don't make much sense. Paul is led by the Spirit to Rome to arrest and execution. The Holy Spirit might nudge us into a spiritual

conversation that we would otherwise avoid out of English politeness. Ultimately, there is no fail-safe guide to getting it right.

Desiring to follow the Lord's guidance is a necessary first step. Regular worship and Bible reading, forming our minds in Christian ways will certainly help also. Being part of a community where we can be open to the wisdom of others is also vital. Jesus promised that the Holy Spirit would lead his followers into all truth after Pentecost. Through mistakes and humility I believe he leads us in his way in the end.

*The Rt Revd Richard Jackson  
Bishop of Hereford*





# EXTRA SUNDAY SERVICES THIS MONTH

*First Sunday*

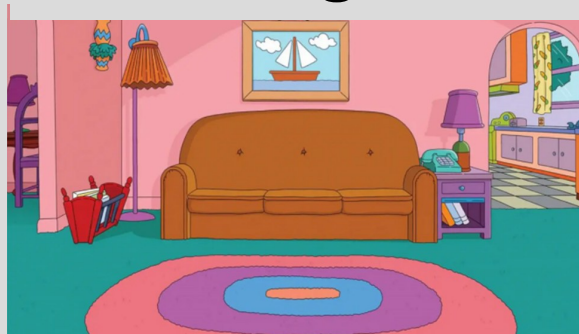
## CHORAL EVENSONG



**3.30pm**  
**In the chancel**  
**Sunday 1 June**

*Third Sunday*

## The Living Room



**All-age informal worship**  
Conversation, games, food and a simple  
sharing of bread and wine

**3.30pm Sunday 15 June**  
**At St John's**

*Third Sunday*

## CHORAL MATINS



**11.30am**  
**In the chancel**  
**Sunday 15 June**

*Fourth Sunday*

## Celtic Prayer

**An Evening Liturgy**  
**St Laurence's Church, Ludlow**



**A simple service in a style used**  
**by the Iona Community**

**6.00pm**  
**Sunday 22 June**

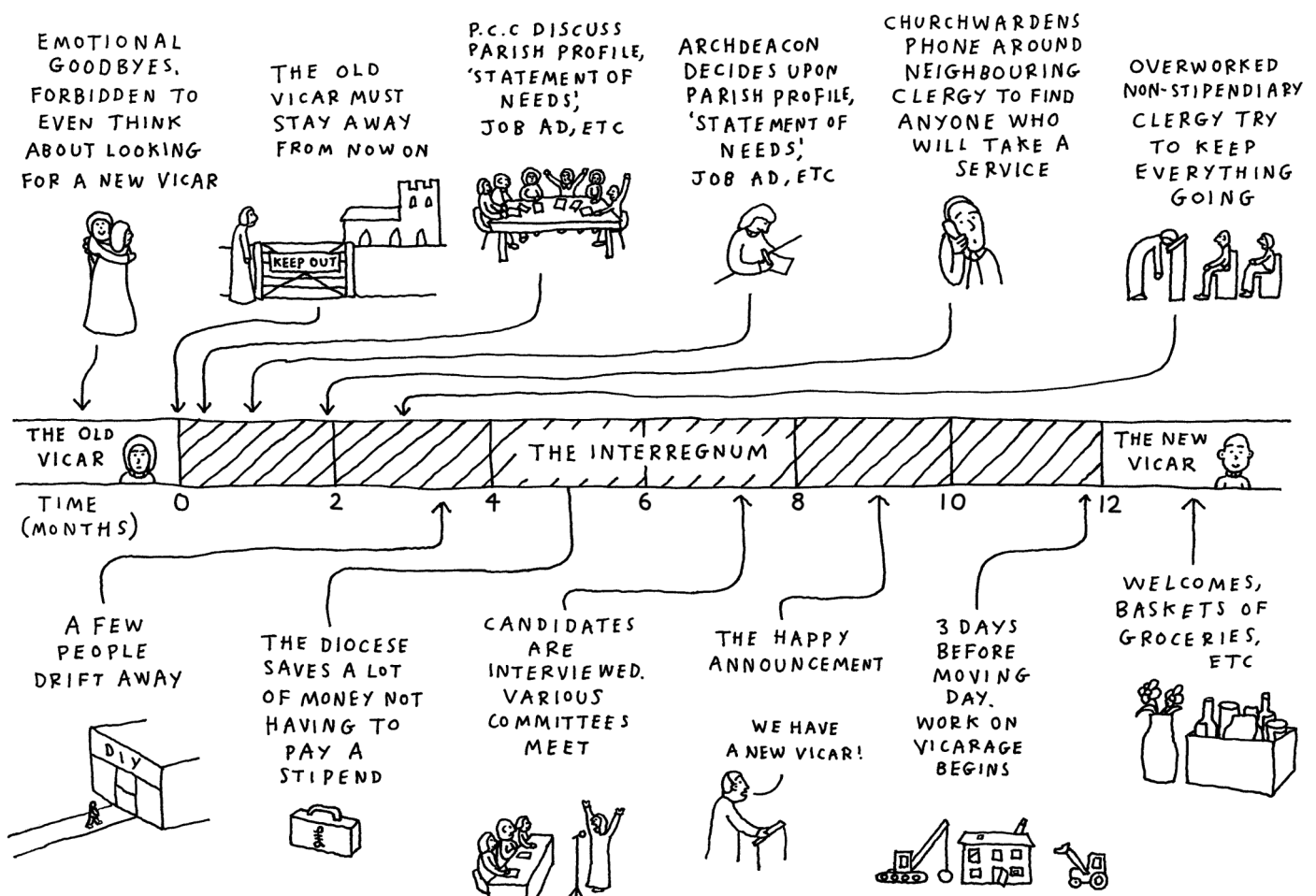


# WHEN DOES THE NEW RECTOR START?

This is the first issue of the Ludlow Tower to appear since Kelvin, our much-loved Rector, presided over his final service in Ludlow. The congregations of St Laurence's and St John's were joined by more than 300 members of the local community for a joyful Easter Eucharist. The service was testament to the achievements of Kelvin's eight years with us - a packed, vibrant and welcoming church, glorious music and powerful testimony from the three young adult candidates for baptism that new disciples are being made in Ludlow as they shared details of their faith journey.

Now that Kelvin has left to take up his new role in Ross-on-Wye we are officially in 'interregnum' or 'vacancy', the terms used to describe the period between one priest leaving the parish and a new priest arriving. During an interregnum the churchwardens are responsible for the day-to-day business of the church, with the support of the Rural Dean, PCC, staff and volunteers. At the same time the complex process (see below) of recruitment kicks off. It is impossible to predict how long it will be before we have a new rector but the national average is around 12 months.

## THE INTERREGNUM



CartoonChurch.com

This CartoonChurch.com cartoon by Dave Walker originally appeared in the Church Times.





22 Coder Road,  
Ludlow Business Park,  
Ludlow SY8 1XE

**01584 877399**

Graphic Design • Colour/B&W Copying • Digital Printing  
Business & Personal Stationery • Business Cards • Banners  
NCR Sets & Invoice Books • Calendars • Wedding Stationery  
Binding Comb & Wire • Laminating • Rubber Stamps

**QUALITY PRINTING, SENSIBLY PRICED**

printing@theinkspot-ludlow.co.uk  
www.theinkspot-ludlow.co.uk



FOR AN APPOINTMENT CONTACT:

07990 104453

caroline.ISH@outlook.com

SERVICES INCLUDE:

- Neuro Vascular Assessment
- Diabetic Foot Health Checks
- Nail Cut & File
- Treatment of Corns and Calluses
- Verruca and Fungal Management

TRAINED BY SMAE INSTITUTE, REGISTERED & INSURED BY  
THE BRITISH ASSOCIATION OF FOOT HEALTH PROFESSIONALS



*SWS Antiques*

*Antiques  
Fine Art  
Oriental &  
Collectables*

07931 004265

*Inst. #sustainabilitywithstyle*

*swsantiques.com*

*Sustainability with Style Ltd*

*5 The Angel, Broad Street,  
Ludlow, Sy8 2PG*



**The Architecture Studio**

Planning Applications  
Listed Building Consent  
Building Regulations  
Alterations & Extensions  
New Buildings  
Church Inspections

135 Corve Street,  
Ludlow SY8 2PG  
Tel: 01584 877992



Email: info@thearchitecturestudio.co.uk  
www.thearchitecturestudio.co.uk

Bathrooms, Kitchens, Hard Flooring  
Including Wood, Tiles & LVT



**topnotch**  
Home Services

Kai Green

07748 473039

01584 812607

topnotchhomeservices@yahoo.com



**141A Vintage & Retro  
Collectables Centre**

Open Mon, Wed, Thur, Fri, Sat  
10am - 5pm  
Closed Tues & Sun

141A Corve Street, Ludlow  
SY82PG 01584 877 572

f /141A

@godsellmark



## Summary of PCC meeting held on Monday 28 April 2025

Eleven members of the PCC attended

- ◆ **Resolutions:** to support application for Introduction to Christian Ministry course; to approve draft new church guide; to move forward on provisions for compliance with 'Martyn's Law'; to approve Safeguarding Action Plan; to approve draft minutes of 2024 APM and APCM minutes and draft Annual Report; to accept gift of books to be sold to raise funds
- ◆ **Finance:** agreed 4% increase in Parish Offer
- ◆ **Policies:** reviewed benches in churchyard policy
- ◆ **Discussions:** Ludlow town walls; compliance with Martyn's Law; trip hazards in church;
- ◆ **Reports received from:** Lay Pastoral Worker; Electoral Roll Officer; Arts@StLaurence;
- ◆ **Date of next meeting:**  
Monday 14 July 2025

## Annual Parish Meetings held on Sunday 11 May 2025

The Annual Parish Meeting elected two churchwardens:

- ◆ Liz Gardner
- ◆ Lesley Harling

The Annual Parochial Church Meeting approved the appointment of 11 PCC members:

- ◆ Ewart Carson
- ◆ Caroline Culley (*ex-officio as Licensed Lay Minister*)
- ◆ Michael Davies
- ◆ Jean Ferguson-Davie
- ◆ Dick Franks
- ◆ Eric Griffiths
- ◆ Stuart McLaren
- ◆ Ian Marshall
- ◆ Mark Turner (*ex-officio as Deanery Synod representative*)
- ◆ Hilary Walters

A copy of the two latest confirmed sets of PCC minutes is available in church. All confirmed minutes can be viewed in the Parish Office.

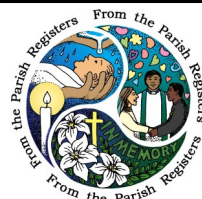
## FROM THE REGISTERS

### Baptisms

18 April James Baker  
20 April Isabella Bradley-Davis  
Angela Jones  
Laurie Morgan-Clare

### Funerals

29 April Charles Weight  
(Henley Cemetery)  
1 May Malcolm Jones  
12 May Janet Goode  
(Hereford Crematorium)





Brides of yesteryear

# Wedding Dresses EXHIBITION

Don't miss this stunning collection of wedding dresses worn by many local brides on their special day

## St Laurence's Church

### 30 June until 12 July

THE PARISH CHURCH OF ST LAURENCE LUDLOW

EXHIBITION ORGANISED BY **Poyner's events**

**ST LAURENCE'S CHURCH**

# UNLOCK THE SECRETS OF THE CHURCH



**Suitable for all ages**

**Collect the keys to the doors in the church to claim your prize**

**Gold coin donation (£1/£2)**

**10am - 5pm every day**  
**24 May - 1 June**

## Ludlow Photographic Club EXHIBITION



Photo courtesy of Peter Lomas. LPC Photo of the Year, 2024

**Saturday, 7<sup>th</sup> June to Sunday 22<sup>nd</sup> June**  
**The Lady Chapel, St Laurence's Parish Church, Ludlow**  
**Free Entry**



# OPEN TEA AT ST LAURENCE

**First Monday in the month at 3pm.**  
**All welcome.**

## MONDAY 2 JUNE

# OPENING DOORS - TO DELIVERANCE

Following a conversation with a younger member of our church family, I've recently been considering the topic of deliverance – 'the action of being rescued or set free' – and how useful it is to recall our own lightbulb moments of coming to faith as a way of re-connecting with Jesus.



It doesn't matter if such moments were small. The small ones are often the most important, as they can help us to appreciate more how individual acts or events lead to change in us.

It's similar to the past month at Stephen House. Our facilities have been used several times by people in need, whilst in the community we have been able to advocate for and support others, some as they contemplate moving into new accommodation after going through a period of uncertainty. We've also been able to help work with another support provider, helping them continue their valuable work in the community.

These acts of support have been many and small but added together they have helped to create momentum towards positive change for those we support, reaffirming their faith in themselves and others ... just as those small moments with God, added together, can bring us ever closer to Him.

As ever, thank you everyone for your support and prayers for Stephen House. God bless.

Paul

# A QUIET REVIVAL

Are the words 'a quiet revival' a contradiction in terms? Not according to the report of that name recently published by The Bible Society.

After many years of publicity being given to the decline in Church congregation numbers the trend appears to have been reversed. The Bible Society Report is a wide-ranging survey of opinions and beliefs among what is known as 'Gen Z', young adults aged 18 to 24.

One of the findings of the survey is that there has been an increase of about 50% in the numbers of this age group attending church once a month or more, compared with a previous survey in 2018. The survey also reveals that 10% of females and 13% of males now attend services. This is a change from 2018 when the survey showed a greater percentage of females than males.

The report tells us that some traditional churches/denominations are struggling to attract this age group but the Catholic and Pentecostal churches are more successful.

Are the churches in Ludlow and surroundings included in this quiet revival. How many of Gen Z attend our services? Answering these questions may result in us having to face some inconvenient truths.







For all your property advice and  
needs  
Please do not hesitate to call

[www.markwiggin.co.uk](http://www.markwiggin.co.uk)  
50 Bull Ring, Ludlow, SY8 1AB  
01584 817 977



Quality legal advice from friendly people

- |                           |  |                              |
|---------------------------|--|------------------------------|
| ■ Agriculture             | ■ Dispute Resolution,<br>Debt Recovery | ■ Court Of Protection        |
| ■ Commercial Property     | ■ & Personal Injury                    | ■ Lasting Powers Of Attorney |
| ■ Residential Property    | ■ Divorce, Family & Childcare          | ■ Wills Trusts & Probate     |
| ■ Company & Corporate Law |  | ■ Criminal Law               |

Suite 8, 54 Broad Street, Ludlow, SY8 1GP

01584 878456 | [www.pcblaw.co.uk](http://www.pcblaw.co.uk)

SHREWSBURY | TELFORD | CHURCH STRETTON | KNIGHTON  
LUDLOW | CLUN | WELSHPOOL | BISHOPS CASTLE



# INTRODUCING

## **Please tell us a bit about yourself.**

I'm Gail Forrest. I left my home in an old mill town in the Rossendale Valley when I was 18 to train as a nurse in Manchester where I met Patrick who was near the end of his training as a psychiatric nurse. We married, he got a job and I didn't finish the course. We moved around quite a lot - Patrick worked at a special hospital on Merseyside, then a young offenders with mental health unit in Dolgellau before we returned to Manchester. By then we had three children and Nicola soon followed. Back to Rossendale next, and on to Lincolnshire where I started a degree course in international relations – but didn't finish. All this time I was working in the gaps round family life, mostly in nursing homes. When we got to Surrey I managed a sheltered housing scheme in Godalming soon moving to a slightly smaller scheme in Epsom. I stayed there for 19 years, during which, to the amazement of my children, I finally got my degree – a first in housing. Within two days of leaving that job last summer we had moved to Ludlow.

## **So what brought you here?**

We came on holiday for four nights – which turned into seven thanks to the 'beast from the east' – and liked it. A trip to check out Richmond, Yorkshire as an alternative was rained off so I suppose the weather brought us. The family (4 children, 9 grandchildren, 1 great grandson) is all in Kent and Surrey so it was a big step but the best thing we ever did.

## **And to St Laurence's?**

We just called in to fill the time on our

extended visit in 2018 but I knew then there was something special about this church. I grew up an Anglican but hadn't been to church since my father died when I was 16 yet the first time I came to a service here it was like I just picked up where I had left off. Patrick was not sure he would be welcome, or comfortable, as a Catholic but he also enjoys the services.



## **Do you have a role in the church?**

I never keep still and wanted to be busy so I offered to help with the flowers. I was soon pulled in as a welcome steward, I'm taking care of the flower planters outside the south porch and I'm learning the ropes to help in the Shop.

## **One feature of St Laurence's which is special for you?**

I feel drawn to St John's chapel. It has a very special feel.

## **How do you spend any spare time?**

Filling it. I enjoy reading, gardening (though we don't have a garden here) and all sorts of music. I took piano and singing lessons when I was younger and my sister is an opera singer.

## **Most memorable holiday experience?**

A sixtieth-birthday trip to Scotland.

## **What might we be surprised to know about you?**

Patrick invited me out on our first date while we were bathing an elderly man – who was looking from one of us to the other saying, 'Well?'.



ALL · WELCOME · TO · OUR



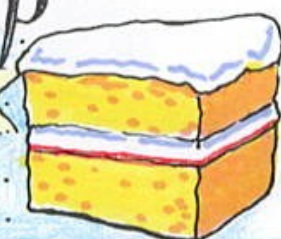
SERVICE!"

A · SHORT · SERVICE · OF  
HOLY · COMMUNION

*Praise & Worship*



*followed by*



TEA & CAKE!

*at St. John's Church, Gravel Hill*

SUNDAY · JULY 13<sup>th</sup>

2-30pm



# NEWS FROM ST JOHN'S



On Palm Sunday thirty six people joined us for a Tea Service, a short communion service followed by tea and cake.

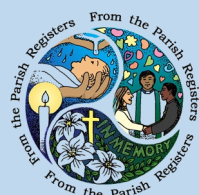


## FROM THE REGISTERS

### Funerals

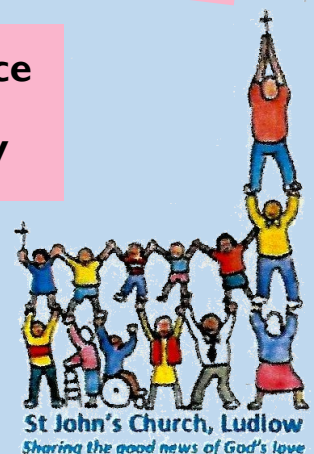
11 April Grahame Hicks

29 April George Downes



## Next Tea Service

Sunday 13 July





**St Leonards Press**  
 PRINT • DESIGN • DIGITAL • COPY

**YOUR ONE STOP PRINT & COPY SHOP**  
 PLANS AND POSTERS PRINTED & LAMINATED UP TO A1  
 PERSONAL AND BUSINESS STATIONERY  
 WEDDING / FUNERAL SERVICE SHEETS

CORVE STREET • LUDLOW • SY8 1DL  
**01584 878283** [st.leonards@btconnect.com](mailto:st.leonards@btconnect.com)

**Victoria Allen**

**Funeral Services**

An Independent Family Business  
 Pre- Paid Funeral Plans  
 Home Visits Always Available  
 24 Hour Service

**01584 879035**

**Garden maintenance**  
**Michael Doyle**  
 Plantsman  
 Over 30 years' experience

**07855 930641**  
[doylemj@hotmail.co.uk](mailto:doylemj@hotmail.co.uk)

**Pest Control**

Moles, Squirrels, Rats, Mice,  
 Wasps, Ants, Moths, Fleas, Bed  
 bugs, biting and crawling insects.

**Chris Sansom**  
**01694 722709**

mobile 07891 638662  
[cs-pestcontrol.co.uk](http://cs-pestcontrol.co.uk)

**MAN AND VAN TRANSPORT**



Single items      Sheds, garages  
 Full loads      & barns cleared  
 House removals      Fully insured  
 Waste removal      Waste licence

**Local and long distance**  
**07940 031 580**  
 Based in Ludlow

  
**LUDLOW**  
 BREWING Co.

Great Beer, Naturally

Taproom open 7 days a week  
 Live music + Street food events  
 Growler fills + Takeouts  
 Venue hire  
 Brewery Tours + Tastings £10.50pp  
 Book Now!

[www.ludlowbrewery.co.uk](http://www.ludlowbrewery.co.uk)  
**01584 873 291 for enquiries**

**Ludlow Curtain Company**  
 The Stables, Station Drive,  
 Ludlow SY8 2PQ  
 Tel 01584 875533  
[ludlowcurtains@hotmail.co.uk](mailto:ludlowcurtains@hotmail.co.uk)

Here for all your soft furnishing needs,  
 from curtains and all types of blinds to  
 cushions, upholstery and curtain  
 poles.  
 Fabrics now available on the roll.

**Skip Hire, Waste Management & Recycling**

Tenbury Wells, Ludlow, Leominster, Craven Arms and

[www.ludlowskiphire.com](http://www.ludlowskiphire.com)

Mixed Waste      **LUDLOW**      Stone & Soil  
 Garden Waste      **SKIP HIRE**      Farm Plastic  
 Builders Waste           Wood & Plasterboard

**01584 877847**  
 Mini - 16 cu.yd Skips

Transfer Station, Weeping Cross Lane, Ludlow SY8 1JH  
[ludlowskiphire@aol.com](mailto:ludlowskiphire@aol.com)

# MEMORIES OF WORLD WAR II

*At 103 Barbara Atkin is, albeit not by much, the oldest member of St Laurence's congregation and worships regularly with us via the Sunday morning livestream. The publicity surrounding recent commemorations to mark the 80th anniversary of Victory in Europe brought to mind many personal memories of wartime and she thought that others might be interested to read them.*



It is probably not widely known that during the Second World War I worked for the Admiralty. I acted as Liaison Officer between the many companies in the Black Country turned over to

war work and the Dockyards of Portsmouth, Sheerness and Rosyth. I was responsible for maintaining the continuing supply of shackles, anchors and chain. There were three girls in the office and a Director, but our overall bosses were the gold braid in London, chief of whom was Commander McKenzie (who once ordered a Commander RNVR (wavy navy) to carry his case to Snowhill Station). He was a cousin of [the writer] Compton McKenzie.

We had many adventures including a massive air raid, one of many, on the eve of my twenty first birthday in 1943. Life was very difficult during the Battle of the Atlantic when merchant ships carrying vital supplies of arms and food were

destroyed often with all personnel. I think these merchant seamen were as brave as any in the war.

There were also comic moments, as when a visiting officer from HQ tried to shield three girls from a low flying bombing raid in a filing cabinet with himself shielding the door. The daylight raid was directed at Longbridge the aircraft factory, once the Austin Motor Company. Birmingham was almost all in ruins, as was Coventry. We worked seven days a week with seven days leave every six months. However, I cannot remember us doubting the victorious outcome. We listened with total confidence to the broadcasts of Mr Churchill.

*Barbara Atkin*



*Barbara on her 100th birthday*

*The Royal Naval Volunteer Reserve (RNVR) was created in 1903 to supplement the Royal Naval Reserve in time of war. It was made up of volunteers who served both onshore and at sea and was nicknamed the 'wavy navy' for the wavy gold braid on the RNVR uniform sleeve distinguishing its wearers from members of the Royal Navy or the Royal Naval Reserve.*





# SUNDAY SERVICES IN LUDLOW

## Anglican

### St Laurence, College Street

8.15am Holy Communion (BCP)

10am Parish Eucharist

For livestream/recording - link at  
<https://stlaurences.org.uk/live-stream>

11.30am Choral Matins  
3rd Sunday

3.30pm Choral Evensong  
1st Sunday

3.30pm The Living Room  
3rd Sunday (St John's church)

6pm Celtic Prayer - evening liturgy  
4th Sunday

5th Sun Joint benefice service  
with St John's

### Contact

[office@stlaurences.org.uk](mailto:office@stlaurences.org.uk)  
01584 872073

### St John, Gravel Hill

10am 1st, 3rd & 5th Sundays  
Holy Communion  
2nd & 4th Sundays  
Morning Worship

5th Sun Joint benefice service  
with St Laurence's

### Contact

[Mike.Beazley@hotmail.co.uk](mailto:Mike.Beazley@hotmail.co.uk)  
01584 873570

### St Giles, Ludford

11.15am 1st Sunday  
Family Worship  
2nd & 4th Sundays  
CW Holy Communion  
3rd Sunday  
Lay-led Worship

### Contact

[ashfordspa@outlook.com](mailto:ashfordspa@outlook.com)

## Ludlow Baptist Church

10.30am Sunday worship

### Contact

[hello@ludlowbaptistchurch.org.uk](mailto:hello@ludlowbaptistchurch.org.uk)

## Ludlow Elim

10.30am Service at Elim

11.30am Online

### Contact

[www.ludlowelim.com](http://www.ludlowelim.com) 07791 483284  
[dainpritchard@gmail.com](mailto:dainpritchard@gmail.com)

## Ludlow Methodist Church

10.30am Sunday worship

### Contact

[Ludlowmethodist@outlook.com](mailto:Ludlowmethodist@outlook.com)

## Ludlow Quakers

10.30am Meeting for worship

### Contact

Cynthia Prior 01584 831855

## St Peter's Roman Catholic Church

Mass 11.00am Sunday

9.30am Monday-Friday

6.00pm Saturday (Sunday Vigil)

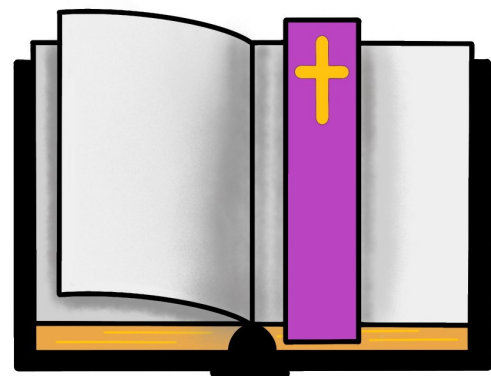
Morning prayer

9.15am Monday-Friday

9.45am Saturday

### Contact

[st.peters.ludlow@talktalk.net](mailto:st.peters.ludlow@talktalk.net)



# A HONEY HEAVEN

This is Christian Aid's 80th year. We celebrate our eightieth birthdays. How much do the millions who look to Christian Aid for support as they try to go about their daily lives feel they have to celebrate, in the traditional sense, as they hit 80? Or any other age. This contrast highlights our Christian commitment to support and empower our global brothers and sisters to achieve self-sufficiency, even in seemingly small ways. In Honduras beekeeping has given people like Juanita, renewed hope and vision for a more fulfilled and sustainable future.



*Juanita with her bees*

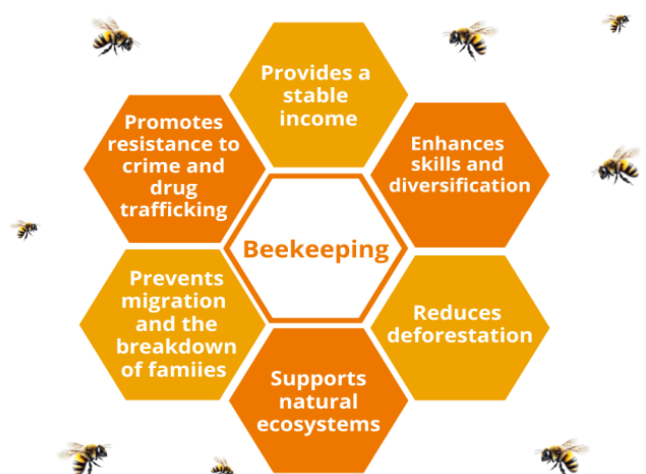
"For me bees mean life. Once I pass away, I wish the beekeeping legacy continues and that more people join the beekeeping movement. I can see God's marvels, because she (the bee) is so small but so hard working. They teach me how to work".

Farmers like Juanita live in the 'dry corridor' of western Honduras. In the face of many emergencies from climate crisis and food insecurity to economic

migration, life is tough. Through beekeeping, Juanita and her group can diversify their income as well as feed their children.

Our donations enable Christian Aid's local partners OCDIH (Christian Organisation for Integrated Development in Honduras) supports Juanita in her goal of becoming a commercial beekeeper as she supports her two children. The bees are an antidote to the injustice Juanita witnesses. The climate crisis makes it hard to harvest coffee, whilst violence against women has devastated many families. Juanita is also training OCDIH workers showing them how to support women who may need access to the justice system

There must be an endless number of Juanitas in Honduras - please think of them when you enjoy honey on your toast. And please remember in your prayers the work of Christian Aid and its partners throughout the world.





# LUDLOW LOCAL LISTING

## Artwork

### Ludlow Castle Gallery

Quality affordable picture framing and artwork. Fast friendly service. Unusual gifts and cards. You can find us within the walls of Ludlow Castle just before the café/restaurant Chapter 66. Phone **07946191716**.

## Books & Stationery

### Castle Bookshop

5 Castle Street Ludlow

Booksellers and Stationers

Free ordering service

01584 872562    enquiries@castlebookshop.co.uk

## Building Services

### Darryl Collier

Carpenter, Joiner, Building Services

Kitchens, Stairs, Windows, Fascia Boards, General Building

Tel 01584 873368 or 07973 411207    Email: daryl.collier@icloud.com

## Electrical

### Ian Mackay

Quick response, local and reliable. No-obligation fixed quotes. Domestic installation and repairs. Landlord & homeowner safety inspections. Condition reports for house sales.

Contact Ian Mackay on 07736 303297 or email [ian.gf.mackay@gmail.com](mailto:ian.gf.mackay@gmail.com)

## Food

### Myriad Organics

22 Corve Street 01584 872664 [myriad-organics.co.uk](http://myriad-organics.co.uk)

Ludlow's widest range of organic and healthy produce: Fruit & veg, wholefoods, groceries, bread, meat & dairy, vegan & vegetarian, natural cleaning products, bodycare, supplements & cosmetics. Zero-waste options & refills for bodycare & cleaning products.

## Gardening

### Dan Pritchard Garden Services

Fully insured - reliable - experienced - competitive. Lawn mowing / hedge cutting / tree surgery / pruning / turfing / planting / landscaping. Call Dan on 07779182636. Covers Ludlow and surrounding areas.

## Insurance Services

### **Teme Valley Insurance Brokers**

For your Home, Business or Farm quote  
Call Mark or Sue on 01584 290055  
enquiries@temevalleyinsurance.co.uk

## IT Services

### **Matthew Lenthall IT Services**

Computers, phones and all things technical. Support and maintenance.  
12a Corve Street, Ludlow 07828 081163 or 01584 877946  
matthew@matthewlenthall.co.uk

### **Digital skills for over 50s**

Having problems using a computer, laptop, iPad, tablet or smart phone? Do not struggle any longer. My name is Jane and I am here to help.  
Please ring 07448378817 to arrange individual tuition.

## Picture Framing

### **Frames by Sebastian**

Bespoke picture framing  
6a Pepper Lane  
Tel: 07815 111554

## Wanted

### **Accommodation**

Accommodation wanted, self-contained, in Ludlow or nearby  
(gardening also undertaken if required).  
Tel 07749 161825. If unavailable please leave a message.

### **Reynolds of Ludlow furniture**

A local researcher & collector wishes to purchase furniture made by Reynolds of Ludlow or information and personal recollections of the company.  
Please contact 07967 134116.

## Wellbeing

### **Silver Lantern Counselling**

[www.silverlanterncounselling.co.uk](http://www.silverlanterncounselling.co.uk)

Contact to arrange a free 15 minute telephone call to discover how counselling can help.  
Telephone or text 07785 473785 Email: [info@silverlanterncounselling.co.uk](mailto:info@silverlanterncounselling.co.uk)

**CLASSIFIED ADS - £40 for 12 months**  
01584 872073 or [office@stlaurences.co.uk](mailto:office@stlaurences.co.uk)



# Arts@St Laurence – June 2025

Further information: [Recitals and Concerts – St Laurence \(stlaurences.org.uk\)](https://stlaurences.org.uk)



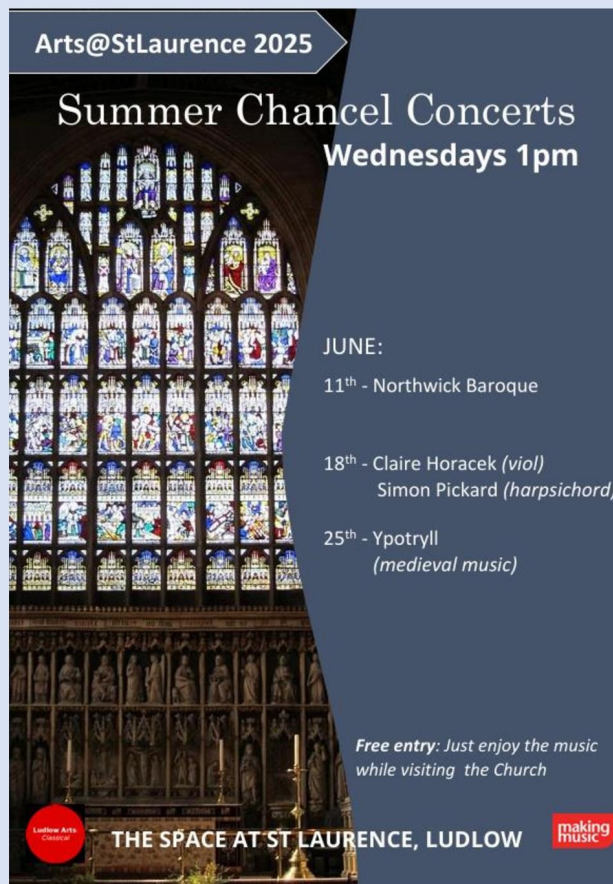
Arts@StLaurence 2025

## Organ Recital

Saturday 7<sup>th</sup> June  
1.00pm

Marion Bettsworth  
*Hereford*

 THE SPACE AT ST LAURENCE, LUDLOW 



Arts@StLaurence 2025



## Summer Chancel Concerts

Wednesdays 1pm

JUNE:

- 11<sup>th</sup> - Northwick Baroque
- 18<sup>th</sup> - Claire Horacek (*viol*)  
Simon Pickard (*harpsichord*)
- 25<sup>th</sup> - Ypotryll  
(*medieval music*)

Free entry: Just enjoy the music while visiting the Church

 THE SPACE AT ST LAURENCE, LUDLOW 



LUDLOW CHORAL SOCIETY

## SONGS of THE SEA

*Elgar's Sea Pictures*  
with choral works inspired by the sea from Sir Hubert Parry, Cecilia McDowall and others

Saturday 14<sup>th</sup> June 2025  
St Laurence's Church, Ludlow 7.30pm

TICKETS £18 AT THE DOOR  
Available in advance from LUDLOW ASSEMBLY ROOMS [www.ludlowassemblyrooms.co.uk](http://www.ludlowassemblyrooms.co.uk)  
18 and under free

Directed by Nicola Starkie  
with  
Mezzo-soprano Gabriella Liandu  
Piano Marion Bettsworth

[www.ludlowchoral.org.uk](http://www.ludlowchoral.org.uk)



Arts@St Laurence 2025

Emma Winscom:  
*mezzo-contralto*  
David Gaukroger:  
*piano*

## Espoirs, Souhais, Rêves et Prières

(*Hopes, Wishes, Dreams and Prayers*)

Saturday 21<sup>st</sup> June  
1.00pm

Free Entry - Donations Welcome

# WHAT'S ON AT ST LAURENCE'S



## IN JUNE

<b>Sunday 1</b>	<b>3.30pm</b>
Choral Evensong	
<b>Monday 2</b>	<b>3.00pm</b>
Open tea	
<b>Wednesday 4</b>	
Conservation Trust AGM	<b>2.00pm</b>
Holy Communion (Common Worship)	<b>6.00pm</b>
<b>Saturday 7</b>	<b>1.00pm</b>
Organ Recital - Robert Patterson	
<b>Sunday 8 - Sunday 22</b>	<b>10am-5pm</b>
Ludlow Photographic Club display	
<b>Wednesday 11</b>	<b>1.00pm</b>
Chancel concert – Northwick Baroque	
<b>Saturday 14</b>	<b>7.30pm</b>
Ludlow Choral Society concert	
<b>Sunday 15</b>	<b>11.30am</b>
Choral Evensong	
<b>Wednesday 18</b>	<b>1.00pm</b>
Chancel concert – viol & harpsichord	
<b>Thursday 19</b>	<b>7.00pm</b>
Solemn Eucharist for Corpus Christi (with incense)	
<b>Saturday 21</b>	<b>1.00pm</b>
Concert - piano and voice	
<b>Sunday 22</b>	<b>6.00pm</b>
Celtic Prayer	


<b>Wednesday 25</b>	<b>1.00pm</b>
Chancel concert - Ypottryl	
<b>Sunday 29</b>	<b>10.00am</b>
Mayor's Sunday - Benefice Service (at St Laurence's)	
<b>Monday 30 - Saturday 12 July 10-5</b>	
Poyners Events wedding dress display	

## MIDWEEK

<b>Daily prayer</b>	
Mondays and Fridays	<b>9.30am</b>
<b>Holy Communion</b>	
First Wednesday in month	<b>6.00pm</b>
<b>Contemplation Group</b>	
Wednesdays	<b>10.30am</b>
<b>Tower bells practice</b>	
Mondays	<b>7.30-9.00pm</b>
<b>Handbells practice</b>	
Tuesdays	<b>5.30-7.15pm</b>
<b>Choir practice</b>	
Thursdays	<b>6.00-8.30pm</b>

## WEDNESDAYS AT ST JOHN'S

<b>Daily prayer</b>	<b>9.30am</b>
<b>Tea and toast</b>	<b>10.00am</b>
<b>Holy Communion</b>	<b>11.30am</b>
<b>Prayer Hour</b>	<b>4.00pm</b>




THE PARISH CHURCH OF  
**ST LAURENCE LUDLOW**  
DIOCESE OF HEREFORD, CHURCH OF ENGLAND

office@stlaurences.org.uk

01584 872073

SERVICES & WORSHIP   CHURCH & OUTREACH   COMMUNITY EVENTS   ENHANCE YOUR LUDLOW VISIT   SUPPORT US   MEET US



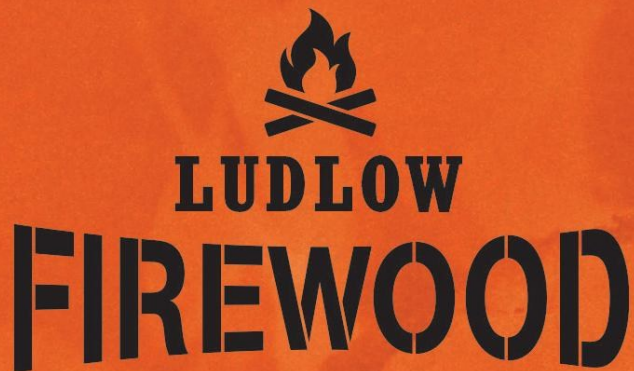
**Welcome to St Laurence's**

About Us

For all the latest news including last-minute changes go to

<https://stlaurences.org.uk/>





# LUDLOW FIREWOOD

~ Est 2019 ~

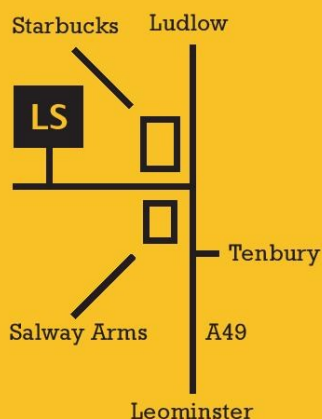
Suppliers of Premium Grade Ready  
to Burn Firewood, Beautifully Crated  
and Delivered to Your Door




# LUDLOW SALVAGE

~ Est 2017 ~

Supplying reclaimed materials  
for your homes and projects



Perfect for woodburners and  
outdoor heating during your stay  
in our lovely town!

**Kiln dried firewood supplied in nets.**

**We also sell kindling,  
natural firelighters and lava rocks!**

Please see our website for details.

**f /ludlowfirewood @ /ludlowfirewood**  
**@ ludlowfirewood@gmail.com**

Plot 1, Station Yard, Station Road  
Woofferton, Ludlow, Shropshire  
SY8 4AW

**07949 318 014**

**WWW.LUDLOWFIREWOOD.COM**

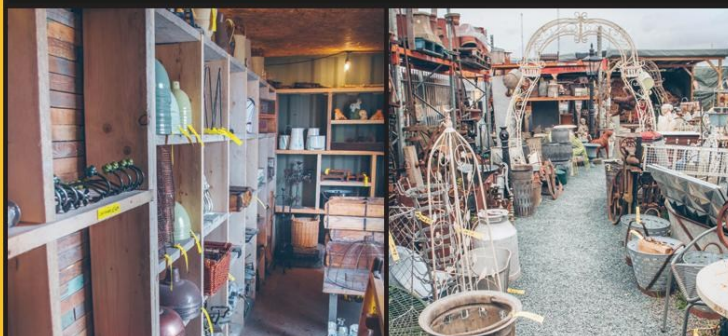


**f /ludlowsalvage @ /ludlowsalvage**

**E ludlowsalvage@gmail.com**

Plot 1, Station Yard, Station Road  
Woofferton, Ludlow, Shropshire  
SY8 4AW

**07805 312 168**





# SUPPORTING WILDLIFE IN SMALL GREEN SPACES - NOTES FROM AN ECO-WORRIER

While the sun was shining last month I was out in my 'garden' sorting my pots for the coming season. I was enjoying the insect life that was attracted to the pear blossom and thinking about how my gardening ambitions have changed now that I only have a small, paved area at the side of my house when in the past I had a very large garden with a stream running through.



*Photo by Mark Timberlake on Unsplash*

It is easy to think that we can only help wildlife and the eco-wellness of our country if we have a huge green area, such as a large garden or an allotment. When I had such a space, I didn't really take note of the wildlife that was attracted to it apart from unusual occurrences. There was the deaf dog that pushed its way in from the neighbouring garden and couldn't work out how to get out again, the very wet retriever that had found its way from the middle of the village, up the stream, and into our back garden and the duck which had crossed the main road and brought her 11 ducklings up the drive. Sometimes foxes would come in the same way.

There was an abundance of insect and bird life, but I never made a special effort to ensure that they had homes or were protected. There were many 'wild areas'

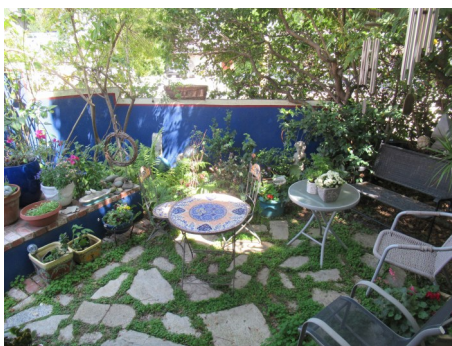
and nature made its home there, though this was due to neglect rather than management.

Now my 'green space' is much reduced I have to make more of a conscious effort to provide room for wildlife. Birds come to the feeders I put out and the butterflies and bees love the flowering plants. There is at least one bat in the tree behind our property and many birds on the waste ground in front.

Having taken the time to notice the wildlife, and help it where I can, I realise that the next step is to pass the information on to others. There are a number of websites where the observations of wildlife can be recorded, such as [irecord.org.uk](http://irecord.org.uk), or surveys we can take part in, such as the garden birdwatch survey. The results from these surveys can help ecologists create a picture of how species are doing and what needs to be done to help them. This is an important way that we can help care for God's creation.

So we don't need to own huge green spaces. Growing plants and watching wildlife on patios and balconies can be very relaxing and also good for the planet. It's a win/win.

*Hilary Walters*



*Photo by Steve Sharp on Unsplash*



# THE TEARS OF ST PETER

Visitors to the Bowes Museum in Barnard Castle in Teesdale often make a beeline for its amazing 18<sup>th</sup> century silver swan automaton. As the music plays, there is the illusion of flowing water: the swan preens itself, bends down and catches a fish in the water.

Another of its treasures is El Greco's 1580 painting 'The Tears of St Peter', purchased in 1869 for less than the cost of the monkey puzzle tree in the grounds outside.

The gospels tell us that St Peter wept bitterly when he heard the cock crow, as he had denied knowing Jesus three times. El Greco shows the saint, his eyes welling with those tears of betrayal, kneeling and turning to heaven for forgiveness. The sky is overcast, reflecting the sad scene below, and we can see ivy growing as a sign of the constancy so lacking in Peter's life.

At the Last Supper he had been the opposite: ready to follow, brave and generous with his words. But Peter leaves Jesus to drink the cup of sorrow alone in Gethsemane. In the courtyard of the high priest, warming himself by the fire, he utters that threefold denial. This was the lowest moment in his life, when instead of being solid rock, he showed that he was merely shifting sand.

And then the wonder and glory of Easter. We glimpse it in the background of the painting with the angel and Mary Magdalene at the tomb. And we know that everything changes for Peter by the shore of the Sea of Galilee. Like the silver swan looking for fish, the disciples

have returned to their old way of life.

But it is the risen Lord who directs them to a marvellous catch, and the charcoal fire of betrayal in the courtyard is now the charcoal fire of breakfast, a new day, and a new way of life for Peter. No denial now – he answers the three questions of our Lord positively and realises that he is loved by Jesus in his failure and weakness. It might have

seemed the end for Peter in the courtyard, but the risen Lord comes to tell him 'I make all things new' and that includes you.

Peter is often known as the stumbling saint. In El Greco's painting he has stumbled and fallen to his knees in prayer. We celebrate St Peter at the end of June. As we look at him, we know ourselves to be as weak and fearful. But the Lord comes to us as He comes to Peter. He lifts us up and puts us back on our feet again. With Peter, we know Him as our crucified and risen Lord.



*El Greco's The Tears of St Peter*

*Revd Michael Burgess*

# THE QUEEN OF TEXTILES

Have you heard? Silk scarves are back! The versatile and iconic accessory is the must-have for this summer. Worn draped around your neck, like a shawl over your shoulders or tied around your hair like a 1960s movie star, it is the on-trend sartorial signature piece.



The magic of silk production begins as the silkworm larva spins a cocoon made from threads, which are then harvested and graded before being woven into silk. Each cocoon can contain between 300

and 900 metres of raw silk

Silk has been woven and worn for over 4,500 years. Numerous myths and legends have grown up about the origins of silk production. Confucius writes of a silkworm cocoon falling off a mulberry tree into the teacup of Empress Leizu. As the Empress unrolled the cocoon, she discovered the long, delicate threads it contained. Her curiosity led to the thread being woven - into the first silk cloth!

Early fragments of silk have been found in tombs in Persia, Greece, Rome and Egypt - Egyptian queen Nefertiti is said to have worn a 'tightly woven



scarf on top of her iconic headdress'. Although the Chinese did ship the highly prized material across the world along the trade networks famously known as the silk routes, they kept the process of making the silk a secret for many centuries. Two unidentified Christian monks smuggled silkworms into the Roman Empire, which broke the Chinese and Persian monopoly.

Fast forward to the 20th century, when Hermes and Liberty began to produce luxury scarves on a bigger scale. Hollywood stars like Audrey Hepburn and Jackie Kennedy and



royalty spread their popularity. Grace Kelly broke her arm whilst on the Onassis yacht and famously used a glamorous silk scarf as a sling.

If you would like a bit of lustrous elegance without paying Hermes prices, the Shop at St Laurence stocks beautiful scarves from British company Fox and Chave. With hand rolled edges, the scarves are made from lightweight habitat silk, with patterns inspired by the works of a wide range of artists. Come and see our selection and then your only decision is - How are you wearing yours?



The Shop at St Laurence  
Mobile: 07833 866485  
[www.theshopatstlaurence.co.uk](http://www.theshopatstlaurence.co.uk)



**Transform  
Trade**

# **Big Brew** 2025

**Join us to support inspirational  
producers fighting for a fairer future.**

**You are invited to:**

**A Big Brew & Fairtrade stall**

**Where:**

**St Laurence's church**

**When:**

**Sunday 22 June 11am**

**For more information, contact:**

**Penny - [pabridstrup@btinternet.com](mailto:pabridstrup@btinternet.com)**

**01584 876992 07747025798**

# FAIRTRADE & BIG BREW BONANZA

Fairtrade stalls have been a part of the life of St Laurence's since 2012 thanks to a small army of supportive volunteers under the leadership of Penny Bridstrup.

However the Big Brew event on Sunday 22 June may be one of the last times we see a Fairtrade stall in the church, partly due to health challenges in the Bridstrup family.

Offers of help with running the stalls might enable them to continue but in the meantime please come along to this important event to help celebrate the achievements of the last 23 years.

**Join us** over a cuppa to support inspirational producers fighting for a fairer future for

## **A Big Brew & Fairtrade Stall**

**In:** St Laurence's Church, Ludlow

**On:** Sunday 22 June

**After:** the 10am Eucharist

Offers of bakes using Fairtrade ingredients, as far as possible, for the Bring and Buy Cake Stall will be most welcome!

The funds raised will be divided between the Fairtrade Foundation and Transform Trade.

Contact Penny - [pabridstrup@btinternet.com](mailto:pabridstrup@btinternet.com) 01584 876992 or 07747 025798

## Arts@StLaurence 2025

# Summer Chancel Concerts

## Wednesdays 1pm

JUNE:

11<sup>th</sup> - Northwick Baroque

18<sup>th</sup> - Claire Horacek (*viol*)  
Simon Pickard (*harpsichord*)

25<sup>th</sup> - Ypotryll  
(*medieval music*)

Ludlow Arts  
Classical

## THE SPACE AT ST LAURENCE, LUDLOW

making  
music



# A P SALE

*Building & Renovation Ltd*



Carpentry • Stonework  
Roofing • Brickwork  
• Dampproofing  
• Timber Treatments

17 Blashfield Road, Ludlow,  
Shropshire SY8 1UE

T: 01584 879677

M: 07816 570132

E: [andrewsale@outlook.com](mailto:andrewsale@outlook.com)

[www.andrewsale.co.uk](http://www.andrewsale.co.uk)

## Blue Hills Choir

### Summer Concert

3pm Saturday 19<sup>th</sup> July

**St Mary the Virgin Church  
Bromfield SY8 2GP**

Following on from last year's very successful concert, come and hear another entertaining programme of Classical Choral pieces.

**Tickets £10 Under 16s free  
including a glass of wine or non-  
alcoholic beverage and snacks.**

**In aid of St Mary's Church**

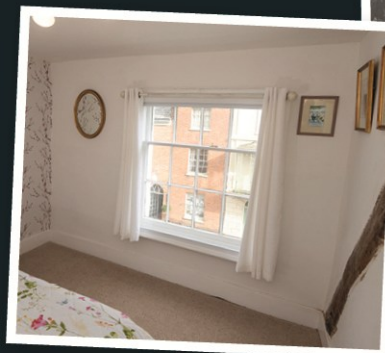
**Tickets at the door or from  
[gordon\\_grant1951@hotmail.com](mailto:gordon_grant1951@hotmail.com)**

# Bespoke Secondary Glazing Solutions

Ideal for:

- Grade II listed buildings
- Noise reduction
- Thermal efficiency
- Reduced condensation
- Increased security

*Recommended  
by Historic England  
for use in heritage  
and grade II  
listed buildings.*



**LANSEC**

[lansecglz.co.uk](http://lansecglz.co.uk)

01299 544 013 | [info@lansecglz.co.uk](mailto:info@lansecglz.co.uk)

Unit 4 Blackmanstitch, Long Bank, Bewdley, Worcs DY12 2QW



# A SMALL JOB

## The Ludlow Palmers

*Helping to conserve the fabric and treasures of St Laurence's*

The Conservation Trust for St Laurence, Ludlow (Registered Charity No. 1114678)



**'It's just a little help we need on the secretarial side. It won't take more than about an hour a week.'**

Having agreed to take on the 'little job' in September last year, I realised very quickly just how limited was my knowledge of the Conservation Trust for St Laurence, Ludlow and of how much the charity has done, and continues to do, to help maintain the fabric of St Laurence's.

Briefly, and for those unfamiliar with what the Conservation Trust (*aka* the Palmers) is and does, the Charity Commission entry states:

*'The Conservation Trust promotes regular giving and fund raising events to provide money to maintain, repair, restore and preserve for the benefit of the public, the fabric of the parish church of St Laurence, Ludlow. The funds are granted to the church PCC for administration for specific projects. The trust is secular and independent.'*

The Trust is headed up by volunteer Trustees (currently nine, including one representative each from the PCC and Civic Society). Meetings are held approximately quarterly when, amongst other items, requests from the church for funding for repairs are considered.

How is our financial assistance for St Laurence's achieved? Over very many years, the Conservation Trust has built up a band of loyal Supporters who love the building and contribute monthly, quarterly, or annually by standing order, through legacies, and by attending fundraising and other events.

In his book 'England's Thousand Greatest Churches', Simon Jenkins gives St Laurence's a five-star rating. Those of us who live in or near Ludlow may tend to take the church for granted with visits limited to concerts, special services or when we have friends staying. But surely, it is a church for all seasons and all people? Certainly, this is obvious when walking round the church and noticing so many visitors from other parts of the UK and, indeed, of the world.

Keeping the church open and keeping the fabric in reasonable order is a constant challenge - and no small job.



### **So how can YOU help?**

Become a Supporter or come to one of our events:

**Wednesday 4<sup>th</sup> June – Annual Meeting** in St John's Chapel followed by a short talk on the history of the Palmers given by past Chairman Hugh Wood

**Friday 20<sup>th</sup> June – Summer Party** in a lovely Ludlow garden

**Tuesday 14<sup>th</sup> October – Autumn Church Tour** to Bourneville

For more information on becoming a Supporter and on events see our website ([www.ludlowpalmers.uk](http://www.ludlowpalmers.uk)) and our regular newsletters to Supporters.

# RIDE + STRIDE 2025

Ride+Stride is an opportunity for all of us to raise money for our church. Anyone can join in: just collect sponsors, plan your route (walking, cycling or driving) to visit some churches and enjoy the day. If you are busy on the 13<sup>th</sup>, simply go on another day

The sponsorship money is split 50:50 between your local church and the Shropshire Historic Churches Trust (SHCT), which awards grants for repairs and improvements to our churches and chapels. So 100% goes to our places of worship - definitely a 'good thing'.

St Laurence's raised **£995** last September, which is amazing. Thank you to everyone who helped in any way, and to all our sponsors.

R+S is not organised centrally. It's something churches do for themselves. And you can do it for your church. It's not rocket science! The county raised over **£39,600** last year - a record!

So our two dioceses are encouraging it to grow - even in parishes where the event is not well-known and the open churches get hardly any visitors. Yet.

The event has enormous potential. Dorset raised **£98,629** last September. My cousin lives there and I'd love to catch up!

Please 'have a go' this year - help preserve our churches in good repair and help to keep them open for the future.



Ride+Stride is a national event run by the National Churches Trust and Shropshire is pleased to join in. The basic idea is twofold:

- 1) Churches are open for visitors on Saturday 13 September from 10 to 6, ideally with light refreshments.
- 2) Anyone can visit as few or as many churches as you wish. Go anywhere ... on foot, by bike, or by car, using our sponsorship form to collect sponsorship for your church and for the Trust.

Could you help St Laurence's to break the £1000 barrier in 2025? Start your planning now by finding a sponsorship form at [www.shropshirehct.org.uk](http://www.shropshirehct.org.uk) and working out how many churches you could visit - there are plenty to choose from with six in Ludlow alone.

David Hardham (Trustee – and County Organiser for Ride+Stride)

[dhardham@yahoo.co.uk](mailto:dhardham@yahoo.co.uk) 01588 650362

# POETS' CORNER: WENDY COPE

## Names

She was Eliza for a few weeks  
when she was a baby -  
Eliza Lily. Soon it changed to Lil.  
Later she was Miss Steward in the baker's shop  
And then 'my love', 'my darling', Mother.  
Widowed at thirty, she went back to work  
As Mrs Hand. Her daughter grew up,  
Married and gave birth  
Now she was Nanna, 'Everybody  
Calls me Nanna', she would say to visitors -  
And so they did - friends, tradesmen, the doctor.  
In the geriatric ward  
They used the patients' Christian names,  
'Lil,' we said, 'or Nanna'  
But it wasn't in her file  
And for those last bewildered weeks  
She was Eliza once again.



**Wendy Cope**  
born 1945

Wendy Cope was born in 1945 in Kent, where her father managed the local department store. She graduated from St Hilda's College, Oxford in History and completed teacher training at Westminster College, Oxford before becoming a primary school teacher for many years.

Cope grew up hearing a lot of poetry read aloud but did not see her own work published until 1986. She was the Arts and Reviews editor for *Contact*, the Inner London Education Authority magazine, and continued to teach part-time before becoming a freelance writer in 1986.

Her first published collection *Making Cocoa* for Kingsley Amis was immensely popular, establishing her name as a witty writer deploying light-hearted wordplay, parody and humour to approach serious subjects. Cope has a keen eye for the everyday, mundane aspects of English life, especially the desires, frustrations, hopes, confusions and emotions in intimate relationships.

She has received numerous awards and accolades including being voted the listeners' choice for Poet Laureate in a BBC Radio 4 poll to succeed Ted Hughes in 1998.





COME VISIT IN STORE  
FOR

- WOOL
- COTTON FABRICS
- WADDING / INTERFACING
- RIBBON
- BUTTONS
- PATTERNS
- EMBROIDERY THREADS
- HABERDASHERY
- WORKSHOPS

AND MUCH MORE

FOR WORKSHOPS, PLEASE  
CHECK WEBSITE FOR DETAILS

WWW.THEWOOLSHOPLUDLOW.CO.UK



WWW.FACEBOOK.COM/THEWOOLSHOPLUDLOW



@THEWOOLSHOPLUDLOW



VISIT US AT  
13 BROAD STREET,  
LUDLOW, SY8 1NG  
01584 872988

## LOCAL MAN

wishes to buy  
**Antiques, Bric à brac,  
Collectables  
and  
Deceaseds' Effects**

Please call  
**01584 892128 07508 809710**



**Advertise your  
business in our award  
-winning magazine**

- ◆ Spaces still available
- ◆ Full page, half page, quarter page or classified ad entry
- ◆ Contact 01584 872073 or [office@stlaurences.co.uk](mailto:office@stlaurences.co.uk)

## Graham Heiron Funerals

Independent Family  
Funeral Directors

Complete Funeral Arrangement  
Covering all areas 24 hours a day

Private Chapel of Rest

Pre-paid funeral plans

Owners of Ludford Park Meadow of  
Remembrance

Home visits always available

**01584 856 273 | [info@heironfunerals.co.uk](mailto:info@heironfunerals.co.uk)**

**Wheelwrights Shop, Bromfield  
Near Ludlow, SY8 2JR**



Toenail cutting  
Corn & callus removal  
Athlete's foot  
Foot massage  
Home visits available  
Diploma Level 4  
Registered & fully insured

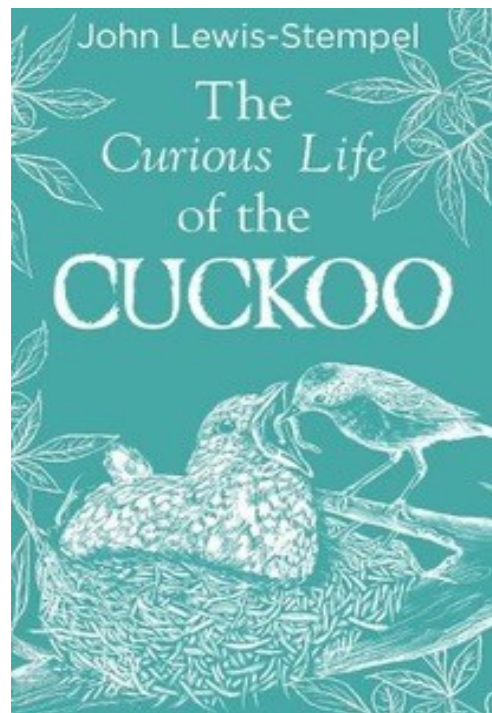
Foot Health Practitioner  
Angie Lennox  
07977 108391 for Appointments

# THE CURIOUS LIFE OF THE CUCKOO

Transworld Publishers 9.99

Is there any bird more mysterious and evasive than the cuckoo – probably, but it has to be near the top of the list in Britain. Who has not been up to the woods in the spring in the hope of hearing the distinctive call or, even more rarely, seeing one. This delightful little book is the latest offering from best-selling, Herefordshire-born writer John Lewis-Stempel – twice winner of the Wainwright Prize for Nature Writing. Even he says he has only seen one twice – first at the age of seven and then again more than 40 years later, in both cases in Herefordshire.

Lewis-Stempel's book gives a detailed account of the life cycle of this little bird "The Real Life of the Cuckoo", from its incredible migration from the jungles south of the Sahara to Britain/Europe for just a few months and its extraordinarily effective parasitic breeding habits. But he also looks at the



cuckoo in myth and folklore and how the bird has inspired writers, from the ancient Greeks and Romans such as Pliny the elder to Wordsworth and even Laurel and Hardy, as well as composers from Handel and Mozart to Mike Oldfield. Did you know that in Dorset the cuckoo is known as a Gawk, in Yorkshire a Gowk, and it's a 'hobby' in Norfolk.

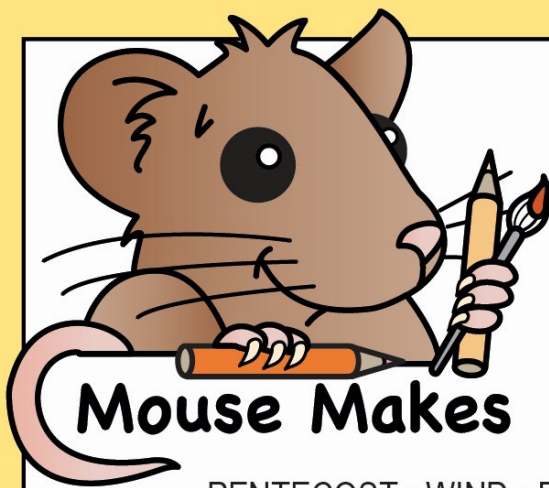
At the end of the book there is a guide to places where you might see/hear a cuckoo around Britain – oddly the author does not have anywhere in Herefordshire or Shropshire in his list and I have certainly heard them in both counties in recent years – and even seen one a couple of years ago in the Mortimer Forest. If the cuckoos have flown by the time you read this – brush up on your research for next spring ...

*Mima Lord*



All books reviewed in the Ludlow Tower are available to buy in  
**The Shop at St Laurence**





## Mouse Makes

PENTECOST • WIND • FIRE  
 HOLY • SPIRIT • TONGUES • RESTED  
 JERUSALEM • JEWS • GALILEANS  
 HEAR • LANGUAGE • ARAMAIC • GREEK  
 HEBREW • PARTHIANS • MEDES  
 ELAMITES • MESOPOTAMIA  
 JUDEA • CAPPADOCIA • PONTUS  
 ASIA • PHRYGIA • PAMPHYLIA  
 EGYPT • LIBYA • CYRENE  
 ROME • CRETANS  
 ARABIANS • GOD



READ  
 Acts  
 2:1- 41

P H R Y P  
 Y R Y P  
 P G E  
 W I N D  
 H A T L  
 J E W S  
 G C H P  
 A O E H J  
 L S A E U  
 C I T R G P  
 P A L I B Y A J  
 L G R E E K P R E  
 L A N G U A G E T T R  
 I C R E T A N S O R H U  
 A C U J C L A S I A T I S  
 L R G R P A M P H Y L I A A  
 H A J E M P P H Y L F O N L  
 S M E S O P O T A M I A S E  
 H P A R T H A N S G L R O P M  
 O I I J E E D T C Y R E N E  
 L R C U D L O U H E B R E W  
 Y I A D O A C S W B G O D  
 L T D E B M I A E E K M  
 A R A B I A N S E J E  
 G Y N O T O N G U E S  
 M E D E S Y P A R  
 E S S H M

It was fifty days since **Passover**, and Jews from many countries had come to **Jerusalem** to celebrate Passover. As the **Apostles** were gathered together the **Holy Spirit** came upon them and they began to speak in other **languages** as the Spirit enabled them.

The crowd that were listening were amazed as they heard about God in their own language.

*How many people heard, believed and were baptised that day?*

**DID YOU KNOW?**

The Bible or parts of the Bible have now been translated into over 3,000 different languages since it was first written in Hebrew, Aramaic and Greek.

# ON WHAT SECURITY CAMERAS IN CHURCH WILL TELL YOU

*The Revd Dr Gary Bowness continues his tongue-in-cheek letters from 'Uncle Eustace'...*

The Rectory  
St James the Least

My dear Nephew Darren,

Much against my better judgement, after a recent series of small thefts, we have installed security cameras here at St James the Least of All. Thank goodness the suggestion for trip wires that opened the gate to Mrs Poppleroy's garden next door, thereby setting loose her deranged Pekingese, was narrowly defeated – though I had to use my casting vote.

So now we have a complete record of everything that goes on when no one is about. It makes such interesting viewing that I have cancelled my television licence and spend every evening watching the antics of my parishioners. I wonder if there is some niche television channel which would be interested; it could help the tower restoration fund no end.

Miss Margison seems to imagine she is now part of some theatrical performance every time she cleans the church; her body language as she wields a feather duster is of operatic proportions, as is her final bow to the cameras as she leaves.

I have at last found the several hiding places where Mr Prentice secretes his bottle of whisky every week when he comes to wind the tower clock.

Colonel Wainwright, who served for some time in the security services, is now worried that photographs of him cleaning the brass will be circulated in Russia. He fails to appreciate that his disguise as a French onion seller, with striped jersey, beret and waxed moustache does tend to make his presence rather more interesting than he imagines – to us, if not to the KGB.



The flower arrangers seem to imagine that we are recording sound as well as pictures and so whenever they are in church together, all gossip is written down and passed round by hand as they work in total silence. So far, they have remembered to take their pieces of paper home with them. One slip and I shall probably learn more about my parishioners in five minutes than I have done in the last five years.

The cameras have also solved the mystery of who has been pilfering the items - and even the nest where they have hidden it. If only I could teach the magpies to extract money from pockets and place it on the collection plate.

Your loving uncle,

*Eustace*





# PARISH DIRECTORY

Ludlow St Laurence Parish Office

Stephen House, 2 College Street, Ludlow, Shropshire. SY8 1AN

e-mail: [office@stlaurences.org.uk](mailto:office@stlaurences.org.uk) website: [www.stlaurences.org.uk](http://www.stlaurences.org.uk)

For appointments call 01584 872073

Rector: In vacancy

Lay Pastoral Worker: Paul Kemp 07785 254568

## Ludlow St Laurence

<b>Parish Office</b>	<b>01584 872073</b>
Office Administrator	Nicky Luck
Finance & Strategy Director	Peter Nield
Gift Aid Secretary	
Social Media & Press	Kate Garrett-Nield
Director of Music	Michael Oakley
Custodian	Matthew Lenthall
Conservation Trust Chair	Sebastian Bowen

## PCC

Churchwardens	Liz Gardner	319332
	Lesley Harling	07309 263730
Assistant	Michael Davies	07970 434822
Churchwardens	Dick Franks	892019
Electoral Roll Officer	Dick Franks	892019
Safeguarding Officer	Dick Franks	892019
PCC Secretary	Lesley Harling	07309 263730
Bible Reading Fellowship	Penelope Bridstrup	876992
Flowers	Sue Thornley	872292
Tower Captain	Richard Bracher	811514
Ludlow Tower	Lesley Harling	07309 263730

Find this and previous issues  
of the Ludlow Tower on line at  
[www.stlaurences.org.uk](http://www.stlaurences.org.uk)



## Ludlow St John

Parish Office	Nicky Luck	872073
Churchwarden	Mike Beazley	873570
Treasurer	Mike Beazley	873570
PCC Secretary	Mike Beazley	873570
Electoral Roll	Sue Thomas	07929900671

## Ashfords Benefice

Rector	In vacancy	
Parish Office	Jemma Saer	831203

## Bromfield Benefice

Rector	Revd Justin Parker	
Parish Office	Martin Scott	07395 413004



## COPY DEADLINE FOR THE NEXT ISSUE

**TUESDAY 3 JUNE**

There is no guarantee that material submitted will be included.

Please send articles by email to [office@stlaurences.org.uk](mailto:office@stlaurences.org.uk)

We are happy to receive contributions and suggestions for inclusion in the magazine. Please limit items to **no more than 400 words**, except by prior agreement with the editor.



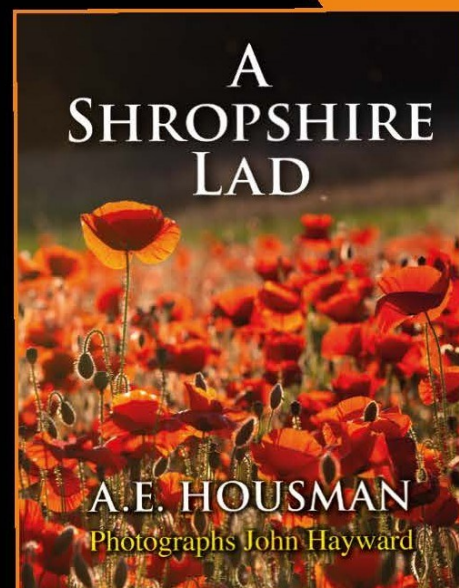
# A SHROPSHIRE LAD

## A.E. HOUSMAN

The rural landscape of the beautiful Shropshire countryside, from the bucolic Clun valley to the bleak hills of Stiperstones, is sympathetically captured by one of Shropshire's finest photographers, John Hayward.

£20

128 page  
hardback



II

Loveliest of trees, the cherry now  
Is hung with bloom along the bough,  
And stands about the woodland ride  
Wearing white for Eastertide.

Now, of my threescore years and ten,  
Twenty will not come again,  
And take from seventy springs a score,  
It only leaves me fifty more.

And since to look at things in bloom  
Fifty springs are little room,  
About the woodlands I will go  
To see the cherry hung with snow.

*Springtime at St Peter's Church, Chelmarsh,  
near Bridgnorth*

*Precious page: Fireworks at Shifnal*

*Overleaf: The bell tower of St Laurence's Church  
looks out over Ludlow*



This is the only photographic edition of *A Shropshire Lad* in which the county's stunning landscapes, which have scarcely altered since Housman's day, have been matched with the stanzas on each page.

Available from the shop at St Laurence's Church  
& Castle Bookshop

Visit [www.merlinunwin.co.uk](http://www.merlinunwin.co.uk) for all our titles





June  
2025

