



the
Parish Magazine

of LUDLOW ST LAURENCE

**The grace of the
present moment**

Pg5

**Made for the
people of Ludlow**

Pg11

Spring into action

Pg29

What is out there?

Pg35



MARCH 2025

Weekday lunch for £10*

Choose from any of our hot counter dishes: fish pie, delicious quiche, our daily changing veggie and meat specials.

Book at
billskitchen.uk

* Monday to Thursday.
6 January to 13 February
at Bill's Kitchen, Ludlow.

Not in conjunction with
any other offer





After a particularly miserable winter in which persistent cold, wet and grey weather mirrored the pervasive gloom and doom of world events this issue of the Ludlow Tower seeks out the bright side of life on a smaller scale.

Meteorologists, astronomers, farmers and gardeners may disagree on the exact date but they are unanimous that spring starts in March. For many of us it is the Easter message of resurrection, hope and joy that epitomises spring.

This year we must wait until well into April for that but while we prepare during Lent we focus on making the most of each day as it comes (p7), finding the positive side of an everyday source of annoyance (p7) and taking the time to look at the great outdoors with fresh eyes (p37). Closer to home we learn more about the beautiful banner of St Laurence (p11) which hangs in our church and meet the team of dedicated volunteers (p29) who will celebrate the season with a big spring clean.

Lesley Harling (Editor)
07309 263730

This month's cover:

Image: Daffodils in St Laurence's
Lesley Harling

Graphic design: Nicky Luck
Nickyluck@nannolica.co.uk

Printing: Signworx Hereford
Moreton-on-Lugg, Herefordshire

CONTENTS

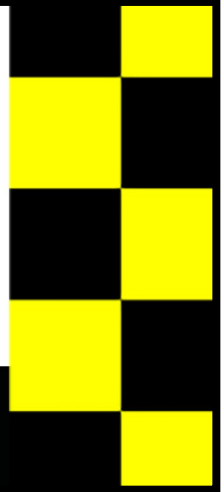
| | |
|--|----|
| The grace of the present moment | 5 |
| The positive side of running out | 7 |
| Why God made mothers | 7 |
| Introducing ... Leah Merrick | 9 |
| Created for the people of Ludlow | 11 |
| PCC news | 13 |
| The Annunciation | 14 |
| Poetry corner: The News | 15 |
| Putting back the smiles | 17 |
| Sunday services in Ludlow | 18 |
| News from St John's | 19 |
| Ludlow Local Listing | 20 |
| What's on in March | 23 |
| The dying art of papier-mâché | 25 |
| Ludlow Rotary Cares | 27 |
| From the registers | 27 |
| Spring into action with the Holy Dusters | 29 |
| Arts@StLaurence programme | 30 |
| Nuremberg Link | 31 |
| Totally Psalmic 2025 | 31 |
| The Little Match Girl Strikes | 33 |
| Back - book review | |
| Notes from an eco-worrier: What's out there? | 35 |
| Children's page | 36 |
| Uncle Eustace - On the perils of parking near church | 37 |
| Parish directory & copy deadline | 38 |

Opinions expressed in contributed articles in this magazine are those of the contributor and do not necessarily represent the position or opinions of the PCC or Editorial Committee.



Pest Control

Moles, Squirrels, Rats, Mice
Wasps, Ants, Moths, Fleas,
Bed bugs, Biting & Crawling insects.



Chris Sansom
01694 722709

mobile 07891 638662
cs-pestcontrol.co.uk



Caroline
Edwards
Foot Care

FOR AN APPOINTMENT CONTACT:

07990 104453
caroline.ISH@outlook.com

SERVICES INCLUDE:

- Neuro Vascular Assessment
- Diabetic Foot Health Checks
- Nail Cut & File
- Treatment of Corns and Calluses
- Verruca and Fungal Management



TRAINED BY SMAE INSTITUTE. REGISTERED & INSURED BY
THE BRITISH ASSOCIATION OF FOOT HEALTH PROFESSIONALS



22 Coder Road,
Ludlow Business Park,
Ludlow SY8 1XE

01584 877399

Graphic Design • Colour/B&W Copying • Digital Printing
Business & Personal Stationery • Business Cards • Banners
NCR Sets & Invoice Books • Calendars • Wedding Stationery
Binding Comb & Wire • Laminating • Rubber Stamps

QUALITY PRINTING, SENSIBLY PRICED

printing@theinkspot-ludlow.co.uk
www.theinkspot-ludlow.co.uk



PCB

SOLICITORS

Quality legal advice from friendly people

- | | | |
|---------------------------|---|------------------------------|
| ■ Agriculture | ■ Dispute Resolution, Debt Recovery & Personal Injury | ■ Court Of Protection |
| ■ Commercial Property | ■ Divorce, Family & Childcare | ■ Lasting Powers Of Attorney |
| ■ Residential Property | | ■ Wills Trusts & Probate |
| ■ Company & Corporate Law | | ■ Criminal Law |

Suite 8, 54 Broad Street, Ludlow, SY8 1GP

01584 878456 | www.pcblaw.co.uk

SHREWSBURY | TELFORD | CHURCH STRETTON | KNIGHTON
LUDLOW | CLUN | WELSHPOOL | BISHOPS CASTLE



THE GRACE OF THE PRESENT MOMENT

At Pentecost, Peter quoted the prophet Joel: 'Your young men shall see visions and your old men shall dream dreams'. Probably he meant that both young and old would have revelations of what is to come through the gift of the Holy Spirit. But realistically, the tendency is for the young to think to the future, and for the elderly to reminisce about the past. In the Lord of the Rings, Bilbo Baggins manages to do both in his song:

I sit beside the fire and think of all that
I have seen
of meadow-flowers and butterflies in
summers that have been;
I sit beside the fire and think of how
the world will be
when winter comes without a spring
that I shall ever see.

Of course, in the grand scale of things, we need historians to awaken us to the good and the bad in the past, so that we copy or avoid them. We need what used to be called futurologists to alert us to what may be coming, climate change and the like, so we can avoid catastrophes. But at a personal level, living largely in the past or being obsessed with the future means we miss out on the present moment, trapped in the past, or indeed in the future.

Lots of people are burdened by the past and may need help to be released from those burdens. That is part of the Church's ministry. Many people are worried about the future. But Jesus said, 'Do not worry about tomorrow, for tomorrow will bring troubles of its own.' Whoever said, 'Today is the tomorrow you worried about yesterday, and all is well' gave a helpful corrective.

We need to focus on what *is*.

St Faustina who was born in 1905 wrote in her diary: *O Jesus, I want to live in the present moment, to live as if this were the last day of my life. I want to use every moment scrupulously for the greater glory of God, to use every circumstance for the benefit of my soul.*

I am wrestling with maintaining that attitude. As I write this we have an agreed sale of our present house and on the one we are buying. If surveys and the like go according to plan, there will be big changes in our life a few weeks after Easter. I could express it as 'We will be leaving Ludlow' and that would be giving a focus on the past, and what will end. If I say 'We will be moving to a new home in Cambridgeshire' – which would focus on a new chapter and what is to come. With those two ways of expressing it go the different emotions of sadness and excitement. There is a place for both. But there are lots of days to come before we move. I want to make the most of every one of them.

What is important for all of us is to retain Faustina's attitude, and value every day as a unique opportunity. There is an introduction to a prayer in Common Worship Morning Prayer which includes the words 'the day lies open before us'. Whether we are facing major changes in our lives, or just another new day, that is a good way of acknowledging what has been called 'the grace of the present moment.' We should be singing and living out the hymn which begins: 'This is the day that the Lord has made. We will rejoice and be glad in it.'

Andrew Body

EXTRA SUNDAY SERVICES THIS MONTH

First Sunday

CHORAL EVENSONG



3.30pm
In the chancel
Sunday 2 March

Second Sunday

The Living Room



All-age informal worship
Conversation, games, food and a simple sharing of bread and wine

3.30pm Sunday 16 March
At St John's

Third Sunday

CHORAL MATINS



11.30am
In the chancel
Sunday 16 March

Fourth Sunday

Celtic Prayer

An Evening Liturgy
St Laurence's Church, Ludlow



A simple service in a style used
by the Iona Community

6.00pm
Sunday 23 March

THE POSITIVE SIDE OF RUNNING OUT

Running out of things is an all too common experience these days, and it's understandable to see a shortage of anything – money, time, possessions - as a sign that we need to fix that shortage, to get more, so all will be well.

This isn't the case though. My work, both at Stephen House and in the community, has shown me that 'running out' of something can be an indication from God for us to think about the situation differently (what would Jesus do in this situation?) and how we can work together with Him to turn it into a positive for both the people we support and ourselves.

Stephen House
Ludlow



An example: this last week at Tea and Toast we used all our supplies, and had to put out more chairs around the table! Similarly, we found ourselves short of cutlery at the Stephen House fellowship group meal.

What a great position to be in! It's evidence of how important it is to sow those mustard seeds of our faith in the community.

One thing that isn't running out is the support from everyone for Stephen House, and the Lay Pastoral Support work. Thank you everyone.

God Bless.

Paul
Lay Pastoral Worker

WHY GOD MADE MOTHERS

According to an old Jewish saying: *God could not be everywhere, and therefore He made mothers.*

Mother Church, Mother Earth, Mother of the Gods, our human mothers - all of them have been part of the celebration of 'Mothering Sunday' - as the fourth Sunday in Lent is known. It has been celebrated in the UK since at least the 16th century.

In Roman times, great festivals were held every Spring to honour Cybele, Mother of all the Gods. Other pagan festivals in honour of Mother Earth were also celebrated. With the arrival of Christianity, the festival became one honouring Mother Church.



During the Middle Ages, young people apprenticed to craftsmen or working as 'live-in' servants were allowed only one holiday a year on which to visit their families - which is how 'Mothering Sunday' got its name. This special day became a day of family rejoicing, and the Lenten fast was broken. In some places the day was called Simnel Day, because of the sweet cakes called simnel cakes traditionally eaten on that day.

In recent years the holiday has changed and in many ways now resembles the American Mother's Day, with families going out to Sunday lunch and generally making a fuss of their mother on the day.

celebrations

Weddings, birthdays, christenings and wakes. Up to 50 in the Orangery, 40 in the Terrace Room or an exclusive use package up to 120 with all dining areas, bar and accommodation included.



the cliffe at dinham restaurant with rooms

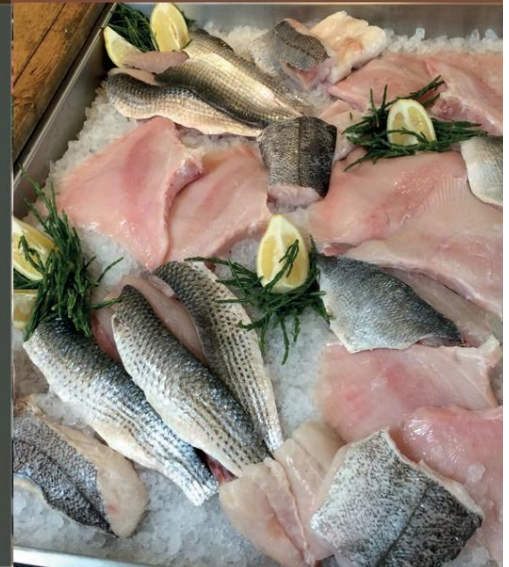


daily food

Open every day from 10.00 for coffee, 12.00 – 2.00 for lunch and 6.00 – 8.00 for dinner (later at the weekend).

Light lunch dishes (with traditional roasts on Sunday) and dinner are served every day.

Dogs, children and walkers welcome.



jazz

Last Friday of every month
Music from 7.00 – 10.00
Tables from 6.30
Smooth sounds of live jazz with songs from the American Songbook, Latin & Blues
Special Jazz Dinner – £25 two course, £30 three course.



fish night

Check website for dates
An evening of fresh fish at £35 including sharing starters, fish mains and desserts.

tasting dinners

Chef's Tasting Dinner – check website for dates. Chef presents a Five Course Dinner for £55 with Optional Wine Flight £30.



bar

Our bar serves traditional draught ale, craft beers and an extensive wine list which features a number of wines by the glass and cocktails for all occasions.

The Cliffe at Dinham Restaurant with Rooms

Halton Lane, Dinham
Ludlow, SY8 2JE

t 01584 872063
f 01584 873991
e info@thecliffeatdinham.co.uk
w www.thecliffeatdinham.co.uk



@cliffeatdinham



INTRODUCING ...

Please tell us a bit about yourself.

My name is Leah Merrick. I am one of five children and grew up on a farm at Greete. My family has lived in the area ever since my great grandmother got on a train from Aberdare to make a fresh start, got off at the end of the line in Ludlow and found a job as a chamber maid at the Angel.

I have lived here all my life, apart from a few years at university. I originally wanted to teach drama but became fascinated by religion, philosophy and ethics at college and ended up studying Teaching and Theology at Birmingham before coming back to Ludlow as RE teacher at the secondary school. In fact I am the second Mrs Merrick to teach there – my gran taught French and PE in the 1960s. I am married to Bob who is the National Trust's head cook for Herefordshire and we have two girls, Flo and Annie.

What brought you to St Laurence's?

Wayne Davies. I met him when he arrived in my class as Intergenerational Missioner, we became great friends and he opened up a new era in my belief. He invited me to come one day when he was preaching here.

First impressions?

It looked very grand and 'high church' but the people were all so kind and down to earth. I would say to anyone else – don't let the beautiful grandeur make you think it's a very formal environment where you have to be on best behaviour and you can't get involved: you can.



One feature of St Laurence's which is special for you?

The people. The girls and I all love the Living Room and Tea & Toast and I enjoy Celtic Prayer.

What is your role at St Laurence's?

Member of the congregation and the Tuesday evening fellowship group, Sunday morning refreshments server and occasional FairTrade assistant. I'm keen to help wherever I can.

How do you spend any spare time?

I don't have much! But I do love my amateur dramatics at the LAR. The rest is mainly spending time with the family – and visiting National Trust properties.

Most memorable holiday experience?

Summer holidays in Borth – I have gone nearly every year since I was a child. I love the quiet simplicity, coastal walks and the chance to relax. Next up, we hope, will be the Outer Hebrides.

What might we be surprised to know about you?

I have a large tattoo of Emmeline Pankhurst in the middle of my back with the words 'deeds not words'.

The Living Room



All-age informal worship

**Re-opens at St John's church
Sunday 16 March 3.30pm**

Hot dogs
pool table
air hockey
football table
Mario Cart
and more

Conversation
play
food

and a simple
sharing of bread
and wine

LUDLOW TOWER

The Parish Magazine of Ludlow St Laurence

Advertising rates 2025-26



**For maximum impact
advertise your business in our
award-winning magazine**

- * Rate card for new advertising year (starts April) now available
- * Contact 01584 872073 or socialmedia@stlaurences.co.uk for your copy

CREATED FOR THE PEOPLE OF LUDLOW

In 2025, the people of Ludlow will witness important anniversaries for two 'modern' artefacts housed in the church, both inextricably linked to their history and both in urgent need of conservation. One is the fabulous Comper banner, described as one of the 'twelve wonders and treasures' of our parish church.

One hundred years ago, in April 1925, the fabulous banner, designed by the last of the great Gothic Revival architects, Sir John Ninian Comper, was dedicated in a religious ceremony to St Laurence's church.

It was created at the Royal School of Art Needlework at the behest of Major General Sir John Longley in memory of his late mother, Emmeline, who died at Dinham in 1922, at a cost of about £80. Today's equivalent would be nearer £4,000. Sir John paid for the banner but it was made 'for the people of Ludlow'.

At that time churches displayed banners to process through the streets but it had become a matter of local concern that St Laurence's had no banners whilst St John's church in Gravel Hill had two!

The design depicts St Laurence, holding the gridiron on which he was martyred in his right hand, flanked by two angels, on a double layer of blue wool damask, embroidered in appliqué gold and silver materials, cream and blue silk damasks,

silk satins, floss silk and metal thread.

In 2008 a conservator estimated that the maintenance then needed on the banner would cost nearly £6,000; the work was never undertaken.

In January 2025, a National Trust conservator examined the banner and other historic textiles. Generally, the banner is in a fair condition but it does need cleaning to remove dust, which causes deterioration in textiles. The



banner should ideally be displayed flat, as hanging exerts pressure on the fibres. It should be regularly 'rested' away from public view, to allow fibres to recover from exposure to light and dust. This would require a custom-made 'acid-free' box. Some minor but specialised needlework, known as 'gold work', would help secure certain loose fibres.

We will begin a process of fund-raising for the project and would also welcome offers of assistance from anyone with experience in 'gold work' to help maintain this wonderful artefact.

Next month we consider the substantial needs of the white ensign from HMS Ludlow hanging in St Catherine's Chapel.

If you are interested in helping with this project please contact the Parish Office

Wear a Hat Walk



**11 am Saturday
29 March**

Please join us - and wear a hat!

Councillor Beverley Waite, Mayor of Ludlow, will lead a short walk around Castle Square

Raising awareness and funds for Brain Tumour Research



Herefordshire Church Crawl

Tuesday 13th May (date tbc)

Coach trip to Brockhampton, Sellack, Ross-on-Wye

Lunch at Wythall Vineyard

£50 all-inclusive
(early booking encouraged)

Contact: Roy Thwaites
(allthwaites@gmail.com)



QUIZ!



**Wednesday 5th March
at Ludlow Brewery**

Doors open at 7pm for 7.30pm start

Teams of four @ £6pp
or join a team on the night

Optional supper from Ludlow Fish Bar
(Payment on the night – card or cash)

Tickets:

Eventbrite (Ludlow Palmers Quiz Night
or info@ludlowpalmers.uk)



OPEN TEA AT ST LAURENCE

First Monday in the month at 3pm.
All welcome.

MONDAY 3 MARCH

TIME FOR A NEW ELECTORAL ROLL

Every 6 years each parish of the Church of England has to produce a completely new Electoral Roll. 2025 is the year when this will occur. So everybody who is currently on the Electoral Roll for either the parish of Ludlow – St Laurence or Ludlow – St John has to re-apply.

Everyone who wishes to have his or her name entered on the new Roll, whether or not it is on the present Roll, is invited to apply for enrolment during March this year. Further information will be given in early March. Please contact your Electoral Roll Officer if you have any queries.

Electoral Roll Officers

| | |
|---------------|-------------|
| St Laurence's | Dick Franks |
| St John's | Sue Thomas |

To be on the Electoral Roll you must be:

- ◇ baptised
- ◇ a lay person
- ◇ at least 16 years of age
- ◇ a member of the Church of England or a church in communion with the Church of England
- ◇ if not resident in the parish you must have habitually attended services in the parish for six months or longer

Being on the Electoral Roll means that you can:

- ◇ vote on church matters
- ◇ attend the Annual Parochial Church Meeting
- ◇ stand for election to the PCC

PCC NEWS

Summary of PCC meeting held on Monday 3 February 2025

Eleven members of the PCC attended

- ◆ **Resolutions:** ratified two out-of-meeting resolutions on town walls; approved use of virtual/hybrid meetings, in an emergency; approved request to reserve Garden of Rest plot
- ◆ **Finance:** cash flow healthy; approx £40k surplus on 2024 annual accounts
- ◆ **Policies:** reviewed Legacies Policy
- ◆ **Discussions:** bid for funding for Associate Minister/School Chaplain role; congregation surveys; PCC representatives on Alms Houses charity and Stephen House art project; annual meetings date - Sunday 11 May 2025; condition and care of Comper banner and HMS Ludlow ensign
- ◆ **Reports:** received from Lay Pastoral Worker and Health & Safety officer; Arts@StLaurence and Local Pastoral Visiting committees
- ◆ **Date of next meeting:** Monday 17 March 2025

A copy of the two latest confirmed PCC minutes is available on the noticeboard at the back of the church. All confirmed minutes can be viewed in the parish office.



FOCUS ON OUR COMMUNITY

- * Do you belong to a local club, choir, society or special-interest group and want to recruit new members?
- * Are you organising a concert, show, dance, sale, or other fund-raising event and want to spread the word to as many people as possible?
- * Tell us all about it and we can offer you publicity in the Ludlow Tower.

Choose between

- ◇ An entry in a diary of events - **free**
- ◇ A half page, like the one on the right, promoting your activities (150-200 words and a photograph) **£10 for local groups**
£25 for local businesses
- ◇ A poster for a one-off event taking place in Ludlow:
Free if in St Laurence's
£18 (full page) / **£12** (half page) / **£8** (quarter page)
- ◇ A poster for a one-off event taking place outside Ludlow:
£35 (full page) / **£21** (half page) / **£12** (quarter page)

To book or for more information email social.media@stlaurences.org.uk

or call

01584 872073



ANNUNCIATION

25 March has always been a significant date. As the quarter day closest to the spring equinox, it was traditionally the day when school terms began, servants started work, and tenants paid their rents, the legal start of the year. It is also the reason why we have to pay our taxes by 6 April: when the Gregorian calendar replaced the Julian calendar and people famously 'lost ten days of their lives' the day previously known as 25 March became 6 April.

Before any of that 25 March was Lady Day, the feast of the Annunciation to the blessed Virgin Mary. This beautiful event took place in Nazareth, when Mary is already betrothed to Joseph. The Archangel Gabriel comes to Mary, greets her as highly favoured, tells her not to be afraid, that she will bear a son, Jesus, that her elderly cousin Elizabeth too is pregnant (with John the Baptist).

The church calendar is never quite as neat as some would like it. To celebrate the Annunciation on 25 March does indeed place the conception of Jesus exactly nine months from His birth on 25 December, although the latter part of March almost invariably falls during Lent. But the birth and death of Jesus are intrinsically linked - He was born to die and thus fulfil God's purposes.

The Annunciation is one of the events most frequently depicted in Christian art. Gabriel's gracious strength and Mary's humble dignity have inspired many artists. Certainly, Mary's response to the angel has for centuries been an example of good faith in practice - humility, enquiry of God, and trusting acceptance in His will for her life.

THE NEWS

An imagining of the moment Mary tells Joseph of her pregnancy

'A sword shall pierce your heart also'

Luke 2:35

What is that tiny light? It is his crystal eye,
That precious orb in which
A universe is held.

It is the dear friend of her youth,
And in his arms, an orphaned new-born lamb
Plucked from the field
Whose whiteness lights his face.
A gift for her?

And that tender look,
For her,
For her alone.

And overhead
A flock of coloured birds,
Vast sky a bridal canopy
Soon to be hers.

But the child that is coming.
She has to tell him.
She'll do it now.

Her foot rings on the path.
She speaks.
Her voice comes from far off,
From distant hills,
Not her.

The love-light fades,
Dies.

He turns away.

For the first,
Not the last
Time,
A sword pierces her heart.



Image by Dorothée Quennesson from Pixabay

Mary Perks



Lent Lunch

St Laurence's Church
Friday 21 March
Friday 4 April
12noon - 1.30pm

**christian
aid**

We believe in life
before death



By holding a Lent Lunch for
Christian Aid you'll be raising
money for vulnerable people
like Michael across the world.

PUTTING BACK THE SMILES

A smile always brightens up the day. I'm sure we have all been told 'to smile, it can't be that bad' even as we feel our world, as we know it, is coming to an end. And most people feel much better for smiling at others. But what about those whose worlds really have changed forever?

Christian Aid and its partner, Smile Again Africa Development Organisation (SAADO), work together to support people at Wedweil Refugee Centre, in South Sudan (Ludlow Tower December 2024). The Centre is a lifeline for families who have had to leave behind life as they knew it, along with all their possessions. SAADO gives each member of registered households the equivalent of £19. As of December last year SAADO had supported more than 4,500 households, prioritising those with vulnerabilities. With careful planning and support, families can save some of the allowance to establish new sources of income, starting to rebuild their lives. When Shede and her family lived in Darfur, Sudan, she worked in a restaurant and on an organic farm. In her new stricken circumstances, it was a daily challenge just to feed herself, her daughters and her two granddaughters, Saida and Marren.

Her first priority was to buy supplies so that she could cook nutritious meals for them all. Shede carefully balanced her cash and food rations deciding how

much to spend on immediate needs and how much to put aside so that they could begin to replace their lost belongings rebuilding the household with items like cooking pots and utensils as she prepared to earn her living once again. She looked forward to slowly building a brighter future for them all.

Shede's story reminds us that even the



Shede with one of her granddaughters

most determined, brave and resilient may need a helping hand, given the most extreme of circumstances. I take my hat off to such families; as we panic over our next electricity bill, we should spare a thought for people like Shede.

There must be millions like her, with an electricity supply which is intermittent at best and without the personal resources to make the changes needed just so that they can live in a home of their own free of uncertainty.

Here is a project where Christian Aid and its local partner balance the need to help people in the middle of unimaginable horror and destitution and the recognition that we are privileged to be able to contribute to their work. Perhaps we can put the smile back on Shede's face.

Please support us at the two Lent lunches in St Laurence's:

21 March hosted by St Laurence's
4 April hosted by the Methodists

Thank you.

Claire 07906 894227

SUNDAY SERVICES IN LUDLOW

Anglican

St Laurence, College Street

- 8.15am Holy Communion (BCP)
10am Parish Eucharist
For livestream/recording - link at
<https://stlaurences.org.uk/live-stream>
11.30am Choral Matins
3rd Sunday
3.30pm Choral Evensong
1st Sunday
3.30pm The Living Room
2nd Sunday (St John's church)
6pm Celtic Prayer - evening liturgy
4th Sunday
5th Sun Joint benefice service
with St John's

Contact

office@stlaurences.org.uk
01584 872073

St John, Gravel Hill

- 10am 1st, 3rd & 5th Sundays
Holy Communion
2nd & 4th Sundays
Morning Worship
5th Sun Joint benefice service
with St Laurence's

Contact

kelvin.price@stlaurences.org.uk
07545 438892

St Giles, Ludford

- 11.15am 1st Sunday
Family Worship
2nd & 4th Sundays
CW Holy Communion
3rd Sunday
Lay-led Worship

Contact

ashfordspa@outlook.com

Ludlow Baptist Church

10.30am Sunday worship

Contact

hello@ludlowbaptistchurch.org.uk

Ludlow Elim

10.30am Service at Elim

11.30am Online

Contact

www.ludlowelim.com 07791 483284
dainpritchard@googlemail.com

Ludlow Methodist Church

10.30am Sunday worship

Contact

Ludlowmethodist@outlook.com

Ludlow Quakers

10.30am Meeting for worship

Contact

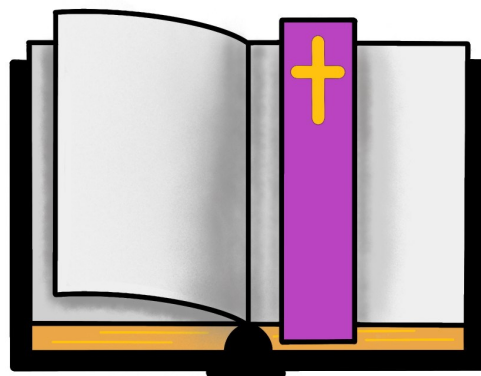
Cynthia Prior 01584 831855

St Peter's Roman Catholic Church

- Mass 11.00am Sunday
9.30pm Monday-Friday
6.00pm Saturday (Sunday Vigil)
Morning prayer
9.15am Monday-Friday
9.45am Saturday

Contact

st.peters.ludlow@talktalk.net



NEWS FROM ST JOHN'S



'THE WRONG TIME!'

That was an emphatic response when we said we would have Christingles at the late January Tea Service at St John's.

Not at all! In fact, the Epiphany season, which lasts until Candlemas, is a very appropriate time to celebrate Christ, the light of the world, which is the message of the Christingle.

Unfortunately, so poor was the weather, with rain and wind making it unsuitable for the residents of the care homes we'd invited to come out, we had to face cancelling the service ... 'We can't do that', said Sue Thomas and church warden Mike Beazley ... I was very dubious. And then, the people began to arrive. First two, then one, three; most of them were not regular church-goers, some had not been to church for ages and others were not church-goers at all. They quickly settled around tables and found themselves a christingle.



A very happy service was followed by tea and cake; the warmth of the welcome was appreciated by those attending. Together, we experienced the warmth of the love and light of Christ on a bleak day.

FROM THE REGISTERS



Funeral

15 January Lillian Genner

ALL WELCOME TO OUR
TEA SERVICE!

A SHORT SERVICE OF
HOLY COMMUNION

Praise & Worship

followed by
TEA & CAKE!

at St. John's Church, Gravel Hill

SUNDAY, 13th APRIL
2-30pm

There clearly is a need for alternative forms of worship – the Tea Service is informal, shorter than our regular worship and St John's lends itself well to this kind of outreach. If you want to come and see why not join us next time - on Sunday 13 April.

LUDLOW LOCAL LISTING

Artwork

Ludlow Castle Gallery

Quality affordable picture framing and artwork. Fast friendly service. Unusual gifts and cards. Find us just before the Castle Cafe or contact on 01584 878527

Books & Stationery

Castle Bookshop

5 Castle Street Ludlow

Booksellers and Stationers

Free ordering service

01584 872562 castlebookshop@btconnect.com

Electrical

Ian Mackay

Quick response, local and reliable. No-obligation fixed quotes. Domestic installation and repairs. Landlord & homeowner safety inspections. Condition reports for house sales.

Contact Ian Mackay on 07736 303297 or email ian.gf.mackay@gmail.com

Food

Myriad Organics

22 Corve Street 01584 872665 myriad-organics.co.uk

Ludlow's widest range of organic produce: fruit & veg, wholefoods, groceries, meat & dairy, vegan & vegetarian, natural cleaning products, bodycare & cosmetics. Waste-free shopping options & refills for cleaning products. Local delivery and our popular organic box scheme.

Gardening

Dan Pritchard Garden Services

Fully insured - reliable - experienced - competitive. Lawn mowing / hedge cutting / tree surgery / pruning / turfing / planting / landscaping. Call Dan on 07779182636. Covers Ludlow and surrounding areas.

Insurance Services

Teme Valley Insurance Brokers

For your Home, Car, Business or Farm quote

Call Mark or Sue on 01584 290055

enquiries@temevalleyinsurance.co.uk

IT Services

Matthew Lenthall IT Services

Computers, phones and all things technical. Support and maintenance.
12a Corve Street, Ludlow 07828 081163 or 01584 877946
matthew@matthewlenthall.co.uk

Picture Framing

Frames by Sebastian

Bespoke picture framing
6a Pepper Lane
Tel: 07815 111554

Wanted

Accommodation

Accommodation wanted, self-contained, in Ludlow or nearby
(gardening also undertaken if required).
Tel 07749 161825. If unavailable please leave a message.

Reynolds of Ludlow furniture

Wanted by local collector and researcher; any condition considered; will collect.
Good prices offered.
Tel: 07967 134116.

Wellbeing

Silver Lantern Counselling www.silverlanterncounselling.co.uk

A confidential space with someone trained to listen and be with you as you explore your experience. Discover how counselling can help. Arrange a free 15-minute initial telephone consultation. Call Julia on 07785 473785. Email: info@silverlanterncounselling.co.uk

ADVERTISING RATES 2025- 26 (for 12 issues)

Full page - £370
Half page - £225

Quarter page - £120
Eighth page - £70

Classified - £42

Rates for part-year available on request

Contact the Parish Office on 01584 872073 or
office@stlaurences.co.uk



The Architecture Studio

Planning Applications
Listed Building Consent
Building Regulations
Alterations & Extensions
Church Inspections

135 Corve Street, Ludlow SY8 2PG

Tel: 01584 877992

Email: info@trevorhewett.co.uk

www.trevorhewett.co.uk

SWS Antiques

*Antiques
Fine Art
Oriental &
Collectables*

07931 004265

Inst. #sustainabilitywithstyle

swsantiques.com

Sustainability with Style Ltd

*5 The Angel, Broad Street,
Ludlow, Sy8 2PG*



THE FISH HOUSE

We receive a fresh delivery daily with a huge variety of raw or smoked fish, shellfish and more.



**Seafood bar
now open Friday &
Saturday**

Open Wed & Thur 10am-1pm
Fri & Sat 10am-3.30pm

WHAT'S ON AT ST LAURENCE'S



IN MARCH


| | |
|---|----------------|
| Sunday 2 | |
| Choral Evensong | 3.30pm |
| Monday 3 | |
| Open Tea | 3.00pm |
| Wednesday 5 | 7.00pm |
| Solemn Choral Eucharist with imposition of ashes (<i>incense will be used</i>) | |
| Friday 14 | |
| Funeral | 2.00pm |
| Sunday 16 | |
| Choral Matins | 11.30am |
| The Living Room service at St John's | 3.30pm |
| Friday 21 | 12pm |
| Lent Lunch | |
| Sunday 23 | 6.00pm |
| Celtic Prayer | |
| Saturday 29 - Monday 7 April | |
| Ludlow Art Society Spring Exhibition | |
| Sunday 30 | 1-4pm |
| Bellringing - full peal | |

MIDWEEK


| | |
|-----------------------------|--------------------|
| Daily prayer | |
| Mondays and Fridays | 9.30am |
| Holy Communion | |
| First Wednesday in month | 6.00pm |
| Contemplation Group | |
| Wednesdays | 10.30am |
| Tower bells practice | |
| Mondays | 7.30-9.00pm |
| Handbells practice | |
| Tuesdays | 5.30-7.15pm |
| Choir practice | |
| Thursdays | 6.00-8.30pm |

WEDNESDAYS AT ST JOHN'S

| | |
|-----------------------|----------------|
| Daily prayer | 9.30am |
| Tea and toast | 10.00am |
| Holy Communion | 11.30am |
| Prayer Hour | 4.00pm |

office@stlaurences.org.uk  THE PARISH CHURCH OF ST LAURENCE LUDLOW
DIOCESE OF HEREFORD, CHURCH OF ENGLAND 01584 872073

SERVICES & WORSHIP CHURCH & OUTREACH COMMUNITY EVENTS ENHANCE YOUR LUDLOW VISIT SUPPORT US MEET US



Welcome to St Laurence's

For all the latest news including last-minute changes go to <https://stlaurences.org.uk/>

Watch the Sunday Eucharist: <https://stlaurences.org.uk/live-stream/>
Catch up with our news: <https://stlaurences.org.uk/news/>



Alexandra House Diamond Life Healthcare

Fully trained carers provide high-quality
personalised care

We provide

Domiciliary Care 24-hour Live-in Care Domestic Care



We are always looking for reliable caring staff
Please ring and speak to our friendly team

01584 872233

Email - diamondlife@btconnect.com

Website - www.diamondlifehealthcare.co.uk

THE DYING ART OF PAPIER-MÂCHÉ

Along with a bunch of daffodils, a papier-mâché egg or bunny is an easy way to brighten up your Easter table. Papier-Mâché is fun to do at home - cover a balloon with torn pieces of newspaper soaked in glue, wait a few days, pop the balloon and paint the remaining 'egg shell' of papier-mâché ... Or you could save yourself from getting covered in glue and paint, and buy a far more beautiful papier-mâché egg from The Shop at St Laurence! The papier-mâché products we sell come from a company called Fair to Trade which supports producers in Palestine, Bangladesh and Nepal. The papier-mâché coming from Kashmir, where it is a skill introduced by the Sufi Muslim Mir Sayyid Ali Hamadani from Persia in the 14th century.

Creating the decorative papier-mâché items involves two crucial steps — Sakthsazi, which means making the actual item, and Naqashi, the painting and decoration of the product. The



making requires the use of recycled paper, collected

from local schools and businesses, to make a pulp. Then each piece is painted by hand to create a beautiful and unique decoration. It is a time-consuming process, and requires a lot of patience. Sadly, for many reasons, including flooding and Covid, this is a dying art.



The government of Kashmir has included papier-mâché on the school curriculum, in an effort to keep this art form disappearing for future generations. With Fair to Trade following the ten principles of Fair Trade as set out by the World Fair Trade Organisation - fair payment, good working conditions and respect for the environment for example, their support will also help to ensure the future longevity of this art form.

By buying these products you are supporting producers in developing countries, and as always, all the profits of the shop go to maintaining the beautiful building of St Laurence's.



The Shop at St Laurence
Mobile: 07833 866485
www.theshopatstlaurence.co.uk

Open Mon-Sat 10am-5pm



THE SHOP
ST LAURENCE LUDLOW

A.T. Lloyd

ELECTRICAL CONTRACTORS

Electrical engineer and contractors for all electrical aspects



T 01694 781532
M 07966 511929/8
E info@atlloyd.co.uk

Bushmoor House
Bushmoor
Craven Arms
Shropshire SY7 8DW

St Leonards Press

PRINT · DESIGN · DIGITAL · COPY

**YOUR ONE STOP
PRINT & COPY SHOP**

CORVE STREET · LUDLOW · SY8 IDL

01584 878283

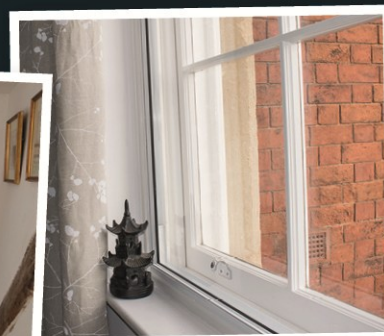
st.leonards@btconnect.com

Bespoke Secondary Glazing Solutions

Ideal for:

- Grade II listed buildings
- Noise reduction
- Thermal efficiency
- Reduced condensation
- Increased security

*Recommended
by Historic England
for use in heritage
and grade II
listed buildings.*



lansecglz.co.uk

01299 544 013 | info@lansecglz.co.uk

Unit 4 Blackmanstitch, Long Bank, Bewdley, Worcs DY12 2QW

CARING FOR THE COMMUNITY

Once again, Ludlow Rotary Club invites local community groups to apply for a grant.

'Ludlow Rotary Cares' is an annual scheme supporting community life in and around Ludlow by offering modest grants to local charities and organisations. For this year the maximum grant available has been increased from £500 to £750.

Over the past nine years the Ludlow Rotary Club has invested over £45,000 in almost 100 local community projects through the scheme. After a successful Dog Day in 2023, the Club is delighted to be able to invest again in our community.

The Club is very open-minded about the types of activities it will support so long as the project or programme responds to a community need in, or within 15 miles of, Ludlow and meets its criteria on the giving of grants. The Club needs to understand exactly what the money will be used for, who will benefit from it and how much difference it will make.



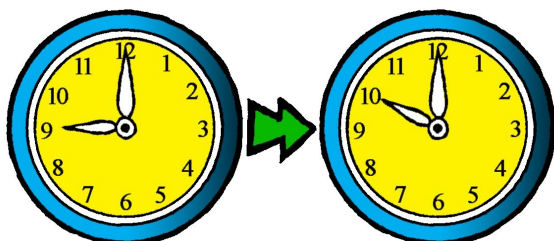
Applications close on **18 April**. Those shortlisted will be invited to an evening event at Ashford Carbonell Village Hall on **13 May** to explain their project for a few minutes to a small panel and to meet other applicants as well as members of the Rotary Club.

The Club is keen to hear from a wide range of organisations including those that have applied, successfully or not, in the past so if you are involved in or aware of one which might benefit, do take a look and download an application form.

For further information please email lrc@ludlowrotaryclub.org.uk.

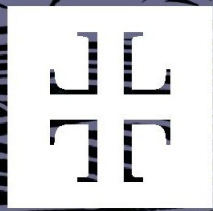
FROM ST LAURENCE'S REGISTERS

Funeral 7 February Penny Acton



DON'T FORGET

The clocks go forward at 2am on
Sunday 30 March



The Ludlow English Song Weekend

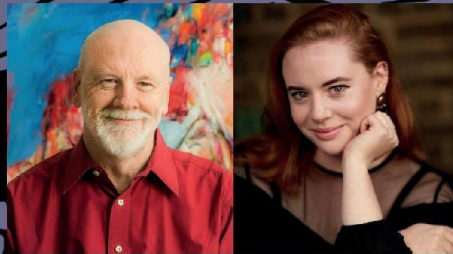
Friday 11th – Sunday 13th April 2025

Ludlow's festival of song returns,
with three days of concerts and events
featuring the very best classical artists
from the UK and around the world.



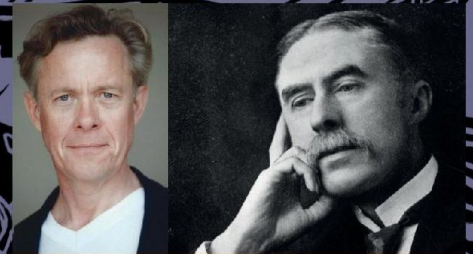
Friday 11th April 2025

Baritone Andrew Hamilton opens the festival with 'Heart's Haven', an Italian-flavoured recital with Iain Burnside at the piano. Plus lute songs from the courts of James VI and I.



Saturday 12th April 2025

Follow the course of true love in 'A Lovers' Tiff', then hear visionary mezzo Lotte Betts-Dean perform with her father Brett Dean in 'Buzz!'. Plus very special guest Dame Janet Baker.



Sunday 13th April 2025

The festival closes with a unique portrait of poet A.E. Housman in songs and letters: Iain Burnside and 3 wonderful singers joined by actor Alex Jennings (*The Queen, The Lady in the Van*).

SPRING INTO ACTION WITH THE HOLY DUSTERS

Visitors to St Laurence's often comment on how clean and tidy the church is. That is down in no small part to our dynamic team of volunteer cleaners, the Holy Dusters. They meet in the church on alternate Mondays all year round to vacuum, dust and polish, supplementing Mina's day-to-day work in the more heavily-used areas of the building.

Team leader, Carole Perrett, says. "The ladies do a fantastic job, working flat out for an hour and a half before sitting down to a well-deserved cuppa and

natter in Icon Coffee, but we simply can't reach every corner of the church. For instance we have to enlist extra help to use the vacuum backpack on the monuments, which gather an amazing amount of dust and dirt but are too high and inaccessible for us. And once a year we have an extended session to blitz the building. Our next spring clean will be on Monday 31 March - 9am to 12 noon and we would be grateful for any offers to boost our numbers that day".



Jean



Angela L



Angela H



Juliet



Christine



Carole

The Holy Dusters are a very friendly bunch so why not come along on Monday 31 March at 9am to meet them? All you need to bring is plenty of elbow grease – Carole will provide all you need to get cleaning.

Absent from photos:
Linda

And of course you would be welcomed with open arms if you wanted to join the team on a regular basis.

To have a chat to Carole and find out more call 07766 148879.



Arts@StLaurence - March 2025

Further information: [Recitals and Concerts – St Laurence \(stlaurences.org.uk\)](http://stlaurences.org.uk)

Spring is Coming....

... And with it our new season of musical events. A big thank you to our wonderful audiences for all the support you have given us in 2024. These are just some of the events we have coming up,

Fri 11 – Sun 13 April



The Ludlow
English Song
Weekend

For more information, and tickets, please see their web site <http://ludlowenglishsongweekend.com/>

Sat 3 May
1pm

Organ Recital Robert Patterson from St Etheldreda's Church, London
The first in our summer lunchtime concert series.

Fri 9 May

"Song of the Hill" a collaboration between Sid Peacock, songwriter in residence, and the Clee Hill community.

Sat 17 May
7.30pm

Ludlow Orchestra features music by Dvorak, Prokofiev Walton and Tchaikovsky

Wed 21- Sun 25 May



Tickets for this year's festival are already selling well.
<https://ludlowpianofestival.com/>

For further details on these, and the additional concerts we will be adding throughout the year please visit our website above, follow our Facebook page The Space at St Laurences, or look out for this, our regular page in The Ludlow Tower.

HEREFORD DIOCESE NUREMBERG LINK



Partnership Encounter Exchange Reconciliation

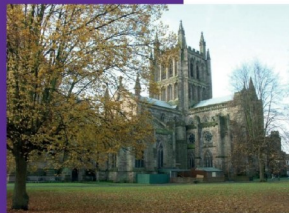
The roots of the partnership between the Anglican Diocese of Hereford and the Evangelical Lutheran Church in Nuremberg go back to the early 1980s. On 21 March 1992 a covenant of co-operation, based on the Meissen Declaration, was signed by the Bishops of Nuremberg and Hereford at Choral Evensong in Hereford Cathedral; it was renewed in 2005.

Since then there have been numerous parish and deanery link events and school and college exchanges. Shared meetings and worship were arranged online during the 2020-21 Pandemic. Choirs, orchestras and other groups from Hereford have visited Nuremberg and there have been many return visits.

These have included delegations from Hereford to the German Kirchentag: Munich 2010, Nuremberg 2023.



Lorenzkirche, Nuremberg



Hereford Cathedral



Hereford Cathedral Voluntary Choir, Lorenzkirche, April 2024



Kirchentag Nuremberg, June 2023

Partnership Encounter Exchange Reconciliation

- ✦ Deanery links – Weissenburg with Leominster
- ✦ Parish links – Ludlow with Langwasser, Madley with Hilpoltstein
- ✦ Student and youth exchanges: joint study projects, visits to WW1 battlefields, intergenerational retreat
- ✦ Choirs:
 - Cathedral Voluntary Choir visits to Nuremberg
 - Simultaneous first performances of Christmas Truce Oratorio, 2014
- ✦ Shared ministry:

- 3 Nuremberg pastors have worked in Leominster and Ludlow
- Revd Judy Dinnen worked 3 months in Hilpoltstein

- ✦ Shared history:
 - Joint seminar on "How our churches and schools commemorate war"
 - Booklet of "Shared Resources for Remembrance"
 - Discussion of shared theological, political, social and ethical issues

Version: 2024



Intergenerational Retreat in Wales, August 2019



Bishop Richard Jackson & Bishop Elisabeth Hann von Weyhern

How about you?

How about your church, your choir, your school, college or youth group?

- ✦ Would you like to be involved in putting into practice ecumenical ideas and the will for reconciliation between our peoples?
- ✦ Would you like to share in a parish or deanery link, a musical exchange or a school or college partnership, in person or online?

If you are interested, contact:

The Bishop of Hereford's Office
Bishop's House
Hereford HR4 9BN
bishop.hereford@hereford.anglican.org
www.hereford.anglican.org
www.bayern-evangelisch.de



Churches Together Around Ludlow



TOTALLY PSALMIC

A Psalms competition with a £600 prize pot

Finding ways to present the Bible's Psalms to a modern audience through entertainment-focused performance

**SATURDAY 19TH JULY 2025 AT
LUDLOW METHODIST CHURCH**

Please register interest by Friday 20th June 2025 for shortlisting.

For more information and an application form contact: Colin Sheward

01584 875946

colinsheward@yahoo.co.uk

ECUMENICAL BIBLE STUDY

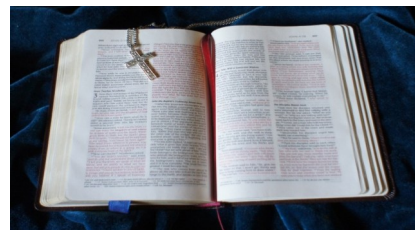


Photo by Unknown Author licensed under CC BY-SA

An opportunity to come together to study God's word and pray that we would all be built up in our faith

Ludlow Baptist Church
Sandford Road
Ludlow SY8 1SX

Tuesdays: 1:30 – 3pm



LUDLOW FIREWOOD

~ Est 2019 ~

Suppliers of Premium Grade Ready
to Burn Firewood, Beautifully Crated
and Delivered to Your Door

Perfect for woodburners and
outdoor heating during your stay
in our lovely town!

**Kiln dried firewood supplied in nets.
We also sell kindling,
natural firelighters and lava rocks!**

Please see our website for details.

**f /ludlowfirewood @ /ludlowfirewood
@ ludlowfirewood@gmail.com**

Plot 1, Station Yard, Station Road
Woofferton, Ludlow, Shropshire
SY8 4AW

07949 318 014

WWW.LUDLOWFIREWOOD.COM



LUDLOW SALVAGE

~ Est 2017 ~

Supplying reclaimed materials
for your homes and projects

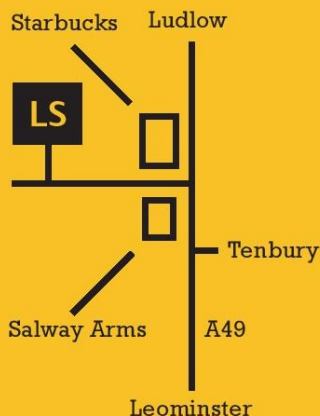


f /ludlowsalvage @ /ludlowsalvage

E ludlowsalvage@gmail.com

Plot 1, Station Yard, Station Road
Woofferton, Ludlow, Shropshire
SY8 4AW

07805 312 168



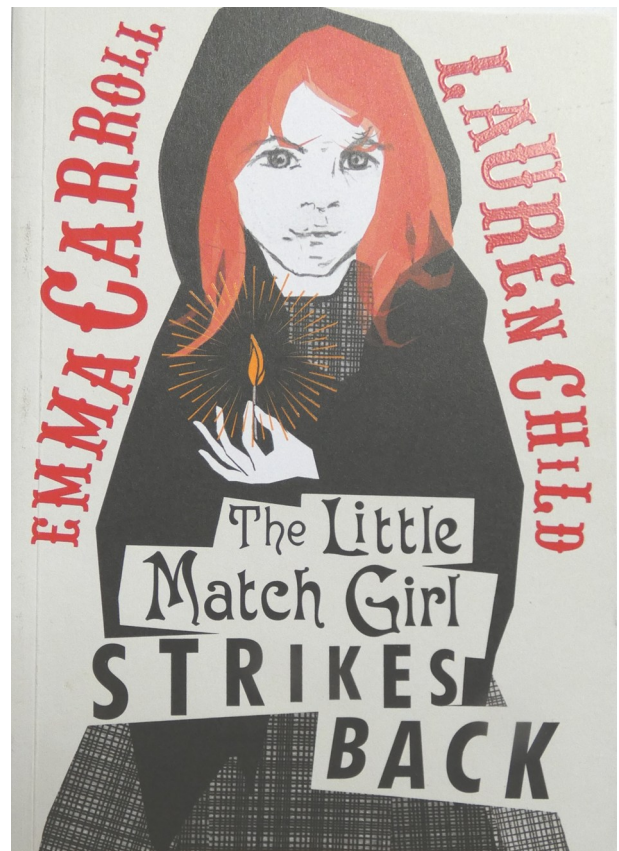
THE LITTLE MATCH GIRL STRIKES BACK

By Emma Carroll and Lauren Child

Simon and Schuster £7.99 (paperback)

Most will be familiar with the famous nineteenth-century tale *The Little Match Girl* from the Danish storyteller Hans Christian Andersen. In Hans Andersen's version a poor little matchgirl dies on New Year's Eve before anyone thinks to help her. And only the rich people learn the moral lesson of his tale – don't ignore those in need. The classic you thought you knew has been brought to life for a current world by the well-known, award-winning writer of historical tales for all ages, Emma Carroll, and her collaborator the illustrator Lauren Child, creator of, amongst other books, the much-loved children's Charlie and Lola stories.

The Little Match Girl Strikes Back is set in London's East End in the 19-century, around the match factory of a Mr Bryant. As the book makes clear 'A match was a cheap wooden spill dipped in a nasty poison which made factory owners rich and their workers sick'. This powerful tale is told by a young illiterate, defiant girl called Bridie (Brigid) Sweeney who lives above a pawn shop with her mother and younger brother – their father is long gone. But in this tale Bridie announces that she is 'a match girl, just like in the world-famous story, though my version has a far better ending ... Top of my list of needs was not being hungry all day, every day. A close second was for the match factory to pay their workers a proper wage'.



This is a masterful interweaving of fairytale and fact with social action at its heart. Very readable (out loud or to yourself) and beautifully illustrated, the book carries the same themes as the original – that the cruelty of poverty forces people, especially in this case women and children, to take work in dangerous conditions, but that imagination and memories can provide comfort. In this instance the defiance, fortitude and ingenuity of a band of women shine through. Read it (to your children or grandchildren) to find out how ... I loved it.

Mima Lord



Skip Hire, Waste Management & Recycling

Tenbury Wells, Ludlow, Leominster, Craven Arms and

www.ludlowskiphire.com

Mixed Waste

Garden Waste

Builders Waste

LUDLOW SKIP HIRE

Stone & Soil

Farm Plastic

Wood & Plasterboard

01584 877847

Mini - 16 cu.yd Skips

Transfer Station, Weeping Cross Lane, Ludlow SY8 1JH
ludlowskiphire@aol.com

MAN AND VAN TRANSPORT



Single items Sheds, garages
Full loads & barns cleared
House removals Fully insured
Waste removal Waste licence

Local and long distance

07940 031 580

Based in Ludlow



Victoria Allen



Funeral Services

An Independent Family Business

Pre- Paid Funeral Plans

Home Visits Always Available

24 Hour Service

01584 879035



Toenail cutting
Corn & callus removal
Athlete's foot
Foot massage
Home visits available
Diploma Level 4
Registered & fully insured

Foot Health Practitioner

Angie Lennox

07977 108391 for Appointments

141A Vintage & Retro Collectables Centre

Open Mon, Wed, Thur, Fri, Sat

10am - 5pm

Closed Tues & Sun

141A Corve Street, Ludlow
SY82PG 01584 877 572



/141A



@godsellmark

Ludlow Curtain Company

The Stables, Station Drive,
Ludlow SY8 2PQ

Tel 01584 875533

ludlowcurtains@hotmail.co.uk

Here for all your soft furnishing needs,
from curtains and all types of blinds to
cushions, upholstery and curtain
poles.

Fabrics now available on the roll.

LOCAL MAN

wishes to buy
Antiques, Bric à brac,
Collectables
and
Deceaseds' Effects

Please call

01584 892128 07508 809710

Garden maintenance

Michael Doyle

Plantsman

Over 30 years' experience

07855 930641

doylemj@hotmail.co.uk

WHAT IS OUT THERE?

NOTES FROM AN ECO-WORRIER

When I was growing up I used to go on walks with my dad most weekends. He was a quiet man with an excellent knowledge of wildlife, particularly birds. As we walked he would often pause to point out a bird or to listen to some bird song. He would tell me their names and gradually I began to appreciate them as well. We would never be described as bird watchers, but I can spot a kestrel at 50 paces!

I loved being out in the countryside and I was lucky enough to live in a small village. Many holidays were spent on the Lancaster canal in our tiny cabin cruiser which was when I learned to be still and watch the kingfishers. Because of the almost casual attention to nature in my childhood I find I still have an appreciation of it now. Sadly, this is not the same for everyone.



I received a text from my sister-in-law the other day asking if I knew what the bird she had seen in her garden was. She had recently moved house and was working in the garden for the first time. She noticed a small brown bird which she didn't think she had ever seen before. It was nice to know that I was

her first port of call to identify the bird – it was a wren – but it was a surprise to me that she had reached the age of 63 with no idea what this fairly common bird was. It made me wonder if our lack of knowledge about wildlife might be holding back our desire to care for it.

I read a quote from Daisy Lowe, a model and wildlife campaigner, who said that we are better at recognising a brand's name than a type of tree. Do brands mean more to us than nature?

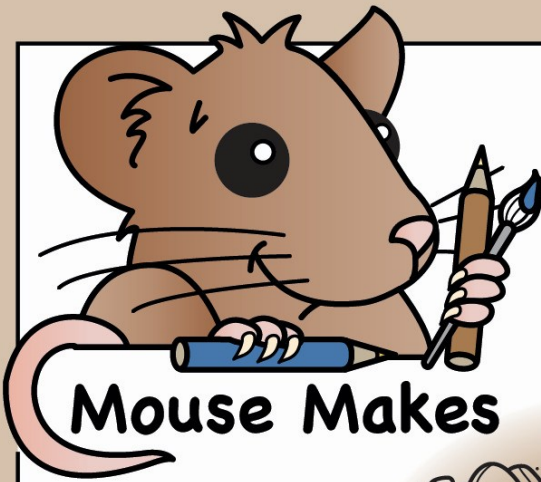
I recently watched Sandi Toksvig restoring an ancient woodland on TV and it was very clearly demonstrated how interwoven wildlife and habitats are. If we destroy habitats how can the wildlife survive? If trees are cut down and not replaced where does our oxygen come from and where does our carbon dioxide go?

God created a magnificent world for us to live in. And he made us the guardians of it. Sometimes it feels that we have trampled on it more than we have cared for and appreciated it. This makes me sad and at times overwhelmed, but we must continue to do our best, appreciate what we have and teach the next generations what's out there and how to look after it.

Hilary Walters

'To stand alone in a field in England and listen to the morning chorus of the birds is to remember why life is precious.'

John Lewis-Stemple, farmer and author.

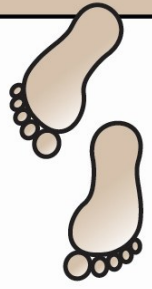


Mouse Makes

THE TEMPTATION OF JESUS

After Jesus was baptised who led him into the wilderness?

 Luke 4:1



For how many days was Jesus tempted by the devil?

 Luke 4:2

What did the devil tempt Jesus to turn a stone into?

 Luke 4:3

What happened after the temptation of Jesus?
 see Luke 4:14-15



Who did Jesus say you should ONLY worship and serve?

 Luke 4:8

Jesus said not to put the Lord your God to the...

 Luke 4:12



READ

the story in
Luke 4:1-13

- JESUS • LED
- WILDERNESS
- DESERT
- TEMPTATIONS
- DAYS • DEVIL
- HUNGRY • SON
- STONE • ROCK
- KINGDOMS
- WORLD • GLORY
- WRITTEN
- SCRIPTURE
- WORSHIP • ONLY
- SERVE • LORD
- JERUSALEM
- HIGH • TEMPLE
- THROW • DOWN
- JUMP • ANGELS
- HANDS • HOLD
- LIFT • FOOT

| | | | | | | | | | | | | | |
|---|---|---|---|---|---|---|---|---|---|---|---|---|---|
| R | W | O | R | S | H | I | P | H | A | N | D | S | D |
| L | I | F | T | W | P | A | H | D | J | U | M | P | A |
| E | L | O | R | D | K | I | O | E | D | O | S | E | Y |
| D | D | O | A | N | G | E | L | S | E | K | T | M | S |
| F | E | H | U | N | G | R | Y | E | B | R | O | C | K |
| O | R | E | J | E | S | U | S | R | Y | O | N | L | Y |
| R | N | S | S | C | R | I | P | T | U | R | E | U | H |
| T | E | M | P | T | A | T | I | O | N | S | G | T | S |
| Y | S | T | D | S | J | E | R | U | S | A | L | E | M |
| B | S | H | O | E | H | K | I | N | G | D | O | M | S |
| R | F | R | W | R | I | T | T | E | N | E | R | P | O |
| E | O | O | N | V | G | G | O | C | E | V | Y | L | N |
| A | O | W | V | E | H | O | L | D | K | I | W | E | |
| D | T | E | S | T | V | D | W | O | R | L | D | | |



Find the words from the questions too!

ON THE PERILS OF PARKING NEAR THE CHURCH

Revd Dr Gary Bowness's elderly Anglo-Catholic rural vicar, Eustace, continues his correspondence to Darren, his nephew, a low-church curate recently ordained...

The Rectory
St James the Least



My dear Nephew Darren,

I cannot be wholly sympathetic about the fact that your church car park is now inadequate, only having space for 100 cars. Your solution of advising members of the congregation to park in the adjoining supermarket car park may not have been wise. The maximum time people can stop there is 90 minutes, and as your services often reach that length, returning to find their cars clamped may not make you universally popular – although it may give your congregation the opportunity of practising Christian forgiveness.

Since the mediaeval architect who built St James the Least of All was not overly concerned with car parking, the only space we have is along the road by the church. Inevitably, it gets blocked, which causes us all immense satisfaction when those not attending church but intending to have a morning shopping, find themselves unable to get out of the village until Matins is over.

I did once encourage people to walk to church across the fields, but after we nearly lost the present Earl in that swampy bit near the brook, I decided the idea was best dropped.

For most, the inconvenience of parking only makes attending church more of a pleasurable challenge; we so enjoy having something to complain about. Major Hastings, however, who has complained endlessly about parking problems, made a point last Christmas by leaving his car in the middle of the vicarage lawn. I was so pleased he happened to park just where I had had a garden pond filled in only the previous week. He returned to find that the car had sunk up to the windscreen and needed a crane to remove it.

For weddings, a farmer allows us to use the field adjoining the church. While he rarely attends church on Sundays, he is always there the week before – I suspect praying for heavy rain, so he can make a fortune charging to tow out with his tractor those who have got stuck. Perhaps the greatest act of witness your church could perform would be to get everyone attending church to park on the ring road, bringing the entire town to a halt until your Sunday morning service is over.

Your loving uncle,

Eustace



PARISH DIRECTORY

Ludlow St Laurence Parish Office

Stephen House, 2 College Street, Ludlow, Shropshire. SY8 1AN

e-mail: office@stlaurences.org.uk website: www.stlaurences.org.uk

For appointments call 01584 872073

Rector: Revd Preb Kelvin Price 07799 243867

Lay Pastoral Worker: Paul Kemp 07785 254568

Ludlow St Laurence

| | |
|-----------------------------|---------------------|
| Parish Office | 01584 872073 |
| Office Administrator | Nicky Luck |
| Finance & Strategy Director | Peter Nield |
| Gift Aid Secretary | Michael Hunt |
| Social Media & Press | Kate Garrett-Nield |
| Director of Music | Michael Oakley |
| Custodian | Matthew Lenthall |
| Conservation Trust Chair | Sebastian Bowen |

PCC

| | | |
|--------------------------|--------------------|--------------|
| Churchwardens | Liz Gardner | 319332 |
| | Lesley Harling | 07309 263730 |
| Assistant | Michael Davies | 07970 434822 |
| Churchwardens | Dick Franks | 892019 |
| Electoral Roll Officer | Dick Franks | 892019 |
| Safeguarding Officer | Dick Franks | 892019 |
| PCC Secretary | Lesley Harling | 07309 263730 |
| Bible Reading Fellowship | Penelope Bridstrup | 876992 |
| Flowers | Sue Thornley | 872292 |
| Tower Captain | Richard Bracher | 811514 |
| Ludlow Tower | Lesley Harling | 07309 263730 |

Ludlow St John

| | | |
|----------------|--------------|-------------|
| Parish Office | Nicky Luck | 872073 |
| Churchwarden | Mike Beazley | 873570 |
| Treasurer | Mike Beazley | 873570 |
| PCC Secretary | Mike Beazley | 873570 |
| Electoral Roll | Sue Thomas | 07929900671 |

Ashfords Benefice

| | |
|---------------|-------------------|
| Rector | Revd Lynn Money |
| Parish Office | Jemma Saer 831203 |

Bromfield Benefice

| | |
|---------------|---------------------------|
| Rector | Revd Justin Parker |
| Parish Office | Martin Scott 07395 413004 |



COPY DEADLINE FOR THE NEXT ISSUE

TUESDAY 4 MARCH

There is no guarantee that material submitted will be included.

Please send articles by email to office@stlaurences.org.uk

We are happy to receive contributions and suggestions for inclusion in the magazine. Please limit items to **no more than 400 words**, except by prior agreement with the editor.

Find this and previous issues of the Ludlow Tower on line at www.stlaurences.org.uk



Gather is a cowork,
creative and multi-use
space in Ludlow,
the heart of the Welsh
Marches.

We offer workshops,
events, collaborations,
contemporary culture.

Facilities

- Desk Space
- Meeting Room
- Photo Studio
- A3 Printer
- Scanner
- Risograph Printer
- Community Kiln
- Pottery Wheel
- Bike Racks
- Kitchen
- Pro Wifi
- Member Portal
- 30% off all workshops and clubs, talks are free



For 3 months full time access
or £20 one-off day pass

Service to Both Seller and Buyer.



With an experienced team, we offer an exceptional service to our clients, combining traditional values with modern technology. We cover all of Shropshire, Staffordshire, Herefordshire, Worcestershire, the Welsh Marches and surrounding counties, specialising in residential, agricultural and development sales and lettings.

1-2 King Street, Ludlow SY8 1AQ.

sales@balfours.co.uk
lettings@balfours.co.uk
01584 707100

www.balfours.co.uk

Balfours
PROPERTY PROFESSIONALS